



Shifted States
Collection

Interpret
Prototype

Interface®

Shifted States™ Collection

Meet Shifted States™, your new go-to carpet tile solution for creating expressive movement across the floorscape. Merging bold geometrics and abstract patterns, the collection's two styles – Prototype™ and Interpret™ – offer complementary color palettes made for hardworking commercial spaces.

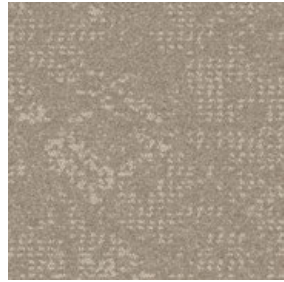
Prototype features an organic geometric design that explores the use of contrasting colors, resulting in a style that helps ground and add variety to spaces. Meanwhile, Interpret takes a more subtle approach with a diffused speckled look and curvilinear patterning. Both are available in on-trend neutral colorways, and their heathered yarn appearance is both smart and forgiving.

Designed to perform and stand out, Shifted States strikes the perfect balance in versatile aesthetics, industry-leading innovation, and climate progress – all at an attainable price point. And it is designed to pair beautifully with our other popular carpet tile collections, including Third Space™ and Open Air™, for unlimited flexibility.

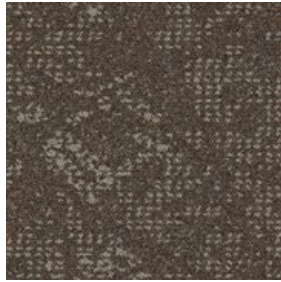




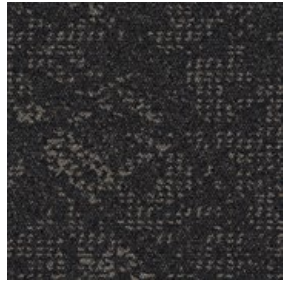
Interpret™ Color Range



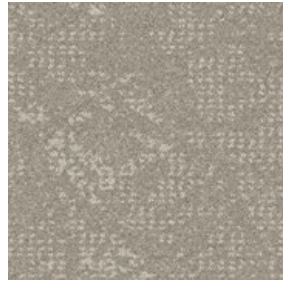
108270 SAND



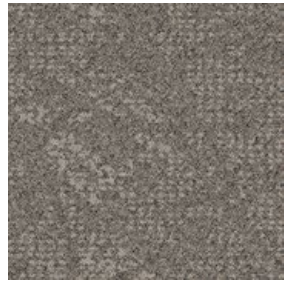
108271 UMBER



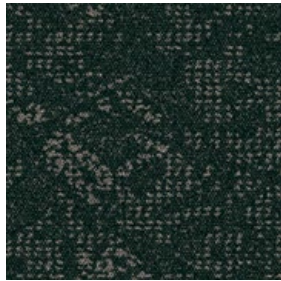
108272 BASALT



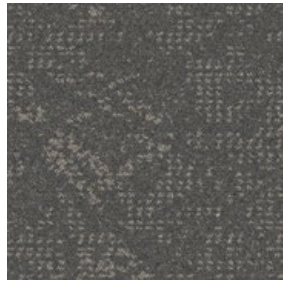
108273 PIGEON



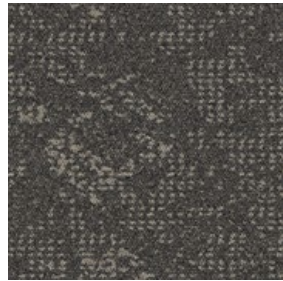
108274 OAT



108275 PINE



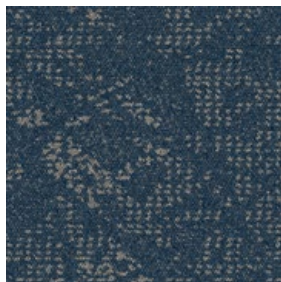
108276 NICKEL



108277 LEAD



108278 BLACK



108279 LAPIS



108280 DENIM



108281 VOLCANIC



Specifications

Modular, 50 cm x 50 cm	14058
Yarn Manufacturer	Aquafil
Yarn System	100% Recycled Content Nylon
Dye Method	100% Solution Dyed
Construction	Tufted Pattern Loop
Preservative Protection	Intersept®
Soil/Stain Protection	Protekt ² ™
Pile Thickness	0.121 in, 3.1 mm
Pile Density	5,653 oz/yd ³
Total Recycled Content	69%
Indoor Air Quality	CRI Green Label Plus #GLP0820

View the full product specification on [interface.com](https://www.interface.com)

Installation Methods



ASHLAR



MONOLITHIC



BROWSE IMAGES
ORDER SAMPLES

PRODUCT INTERPRET COLOR BLACK INSTALLED MONOLITHIC



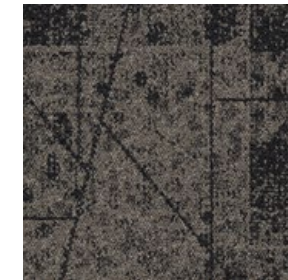
Prototype™ Color Range



108258 SAND



108259 UMBER



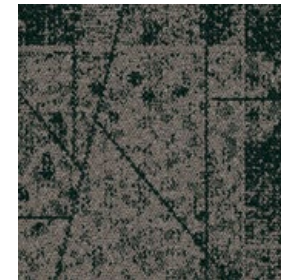
108260 BASALT



108261 PIGEON



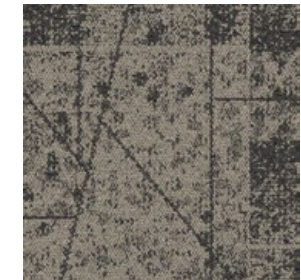
108262 OAT



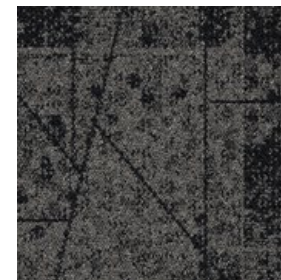
108263 PINE



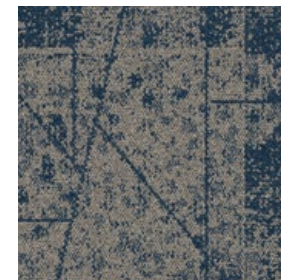
108264 NICKEL



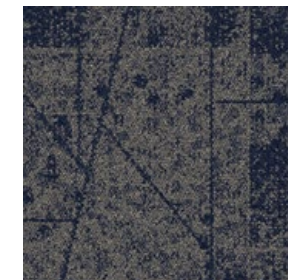
108265 LEAD



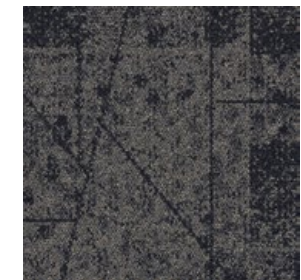
108266 BLACK



108267 LAPIS



108268 DENIM



108269 VOLCANIC

Specifications

Modular, 50 cm x 50 cm	14056
Yarn Manufacturer	Aquafil
Yarn System	100% Recycled Content Nylon
Dye Method	100% Solution Dyed
Construction	Tufted Pattern Loop
Preservative Protection	Intersept®
Soil/Stain Protection	Protek ² ™
Pile Thickness	0.119 in, 3 mm
Pile Density	6,050 oz/yd ³
Total Recycled Content	69%
Indoor Air Quality	CRI Green Label Plus #GLP0820

View the full product specification on [interface.com](https://www.interface.com)

Installation Methods



ASHLAR



MONOLITHIC

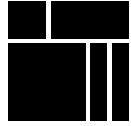


**BROWSE IMAGES
ORDER SAMPLES**



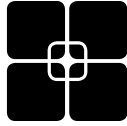


Why Our Modular Flooring?



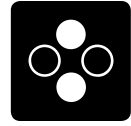
Modular Flooring

Performance and flexibility. Interface's standard backing systems set the industry standard for modular performance. Tiles stay on the floor with no upcurl, no taping and no rippling effect, yet are easy to selectively replace. Our modular carpet is easier to handle than bulky roll carpet and produces an average of just 3-4% waste compared to roll carpet's average of 14%. And it installs seamlessly with our LVT, no transition strips needed.



TacTiles™

No glue installation. Our revolutionary TacTiles installation system eliminates the need for glue, adhering tiles securely together to form a floor that “floats” for greater flexibility, easier replacement and long-term performance. The result? Less mess, less waste and virtually no VOCs, not to mention an environmental footprint that is over 90% lower than that of traditional glue adhesives. TacTiles are approved for use on GlasBac™, CQuest™GB, CQuest™Bio and CQuest™BioX.



Intersept®

Mold protection. Our proprietary preservative, Intersept, protects our modular carpet against mold growth and odor-causing bacteria—guaranteed. Intersept treated carpet, with proper maintenance, shows no mold or bacterial growth when tested per the ASTM E2471 Standard Test Method. Intersept is EPA approved for safe use in carpet, water insoluble and contains no halogens, heavy metals, phenols or formaldehyde. Intersept is standard in Interface carpet tile products backed with GlasBac, CQuestGB, ReadyBac™ and CushionBac Renew™.



Environmental Product Declaration (EPD)

A statement of product ingredients and environmental impacts over the entire life cycle of a product. A comprehensive life cycle assessment (LCA) is performed to ISO standards to develop an EPD, after which both the EPD and LCA must be third party verified.



Health Product Declaration (HPD)

A transparency tool for evaluating whether a product supports Green Chemistry. As part of our work on Health and Materials, Interface continuously reduces the environmental and health impacts of our products through elimination of materials of concern.



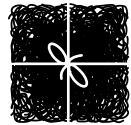
CRI Green Label Plus

An independent testing program that identifies carpet and adhesives with very low emissions of VOCs to help improve indoor air quality.



NSF 140 Sustainable Carpet Assessment

The only carpet sustainability standard in North America that evaluates the environmental impact of carpet for its entire life cycle.



ReEntry™

Recyclable. Through our ReEntry program we reclaim and recycle our carpet tile and Sound Choice™ LVT. ReEntry is the only third party certified recycling system among North American flooring manufacturers.



Sustainability Transparency

Transparency and certified sustainability leadership come standard on Interface products. We enlist outside partners to help us evaluate the entire product life cycle and reduce the environmental and human health impact of our flooring. And, carpet products made in our US facilities are made with 99% renewable energy.

📍 Samples

Register and order samples at [interface.com](https://www.interface.com). Not near a computer? You can also request samples by calling one of the numbers below.

United States
1.877.605.1500

Canada
1.866.398.3192

[interface.com](https://www.interface.com)

- Do more on [interface.com](https://www.interface.com)
- Browse products and order samples
- Save and share favorites
- See images of products in a variety of room scenes
- Browse floor designs, change colors, upload your own image, download and share
- Get full specifications, sustainability certifications and more
- Check order status and inventory availability
- Sign up to get the latest information on Interface products and news

InterCircle Sample Return

Help us close the loop on the carpet sampling process. Through our InterCircle Sample Return program, sample materials stay out of the landfill and are re-used as samples until it is time to recycle them into new carpet. By reducing sample production material and diverting old materials from the landfill, we can reduce our overall environmental footprint.

Call 1.877.605.1500 (U.S.) or 1.866.398.3192 (Canada) to order a sample return bag with a prepaid return label.

We have tried our very best to accurately represent product colors. However, due to the nature of printed materials, color of actual products may vary slightly. Please request a sample to see actual product color.

All product specifications reflect averages derived from product sample testing, are subject to normal manufacturing and testing tolerances and inherent pattern variances, and may be changed without notice. For more information about these and other important attributes of the product(s) described herein, including recycled content and product warranty information, please see [interface.com/disclaimer](https://www.interface.com/disclaimer).



PLEASE RECYCLE

Printed on 50% post consumer waste (PCW) fiber manufactured using wind power.

interface.com

United States Headquarters

1280 West Peachtree Street NW
Atlanta, GA 30309
1.800.634.6032

Canadian Headquarters

233 Lahr Drive
Belleville, ON K8N 5S2
1.800.267.2149 ext. 52128

CIM# IFS00961 08/2024



Climate change is undeniable. And reversible. Our mission is to prove it.
Join the #ClimateTakeBack and help create a climate fit for life.