

Off Line



Interface®

Off Line™

---

A good departure from ho-hum thinking is a willingness to explore the edges. When we blur the lines between two things, we no longer see each as it was—we reposition both.

On its own Off Line can present a staccato, banded effect with interesting variations. Playing with the bold solids from On Line™, Off Line veers in a new direction by creating transitions between neutrals and brights, hard and soft lines. An installation that blends On Line and Off Line together alters our impression of the scale and repeat of both styles, toying with the length of connectivity and creating an entirely new composition. Sometimes, the best course is to take it Off Line.



PRODUCT OFF LINE COLOR 104332 SAGE/BISCUIT  
PRODUCT ON LINE COLOR 103785 BISCUIT INSTALLED PATTERN BY TILE





PRODUCT OFF LINE COLOR 104336 PEPPER/CLOUD INSTALLED PATTERN BY TILE





PRODUCT OFF LINE COLOR 104334 PEWTER/CLOUD INSTALLED HERRINGBONE







PRODUCT OFF LINE COLOR 104333 SAGE/CANARY INSTALLED PATTERN BY TILE



PRODUCT OFF LINE COLOR 104337 PEPPER/LIME  
PRODUCT ON LINE COLORS 103788 PEPPER, 103798 LIME INSTALLED ASHLAR

## Off Line Colorline

---



104330 MUSHROOM/BISCUIT



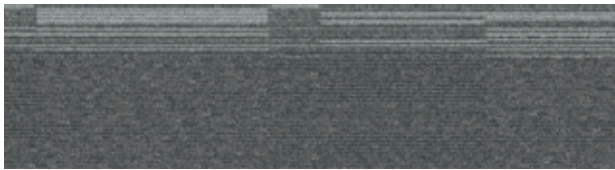
104331 MUSHROOM/MUSTARD



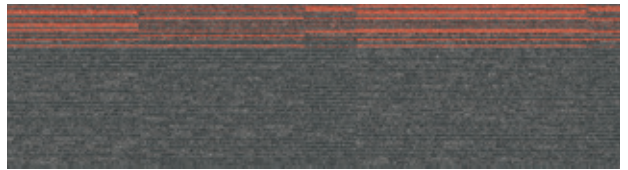
104332 SAGE/BISCUIT



104333 SAGE/CANARY



104334 PEWTER/CLOUD



104335 PEWTER/MANDARIN



104336 PEPPER/CLOUD



104337 PEPPER/LIME

## On Line Colorline

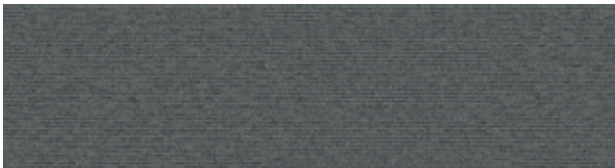
---



103783 MUSHROOM



103785 BISCUIT



103787 PEWTER



103788 PEPPER



103789 SAGE



103791 CLOUD



103798 LIME



103800 MUSTARD



103802 CANARY

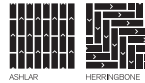


103803 MANDARIN

## Specifications Off Line

---

Modular, 25cm x 1m	138740AK00
Backing System	GlasBac® Tile
Yarn Manufacturer	Aquafil
Yarn System	100% Recycled Content Nylon
Color System	100% Solution Dyed
Construction	Tufted Textured Loop
Preservative Protection	Intersept®
Soil/Stain Protection	Protekt <sup>2</sup> ®
Pile Thickness	0.123 in., 3.1 mm
Pile Density	6,146
Total Recycled Content	77%
Indoor Air Quality	CRI Green Label Plus #GLP0820



## On Line

---

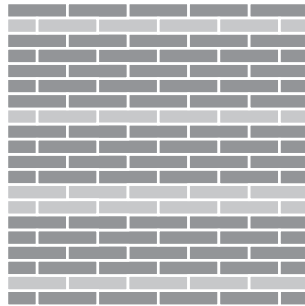
Modular, 25cm x 1m	138700AK00
Backing System	GlasBac® Tile
Yarn Manufacturer	Aquafil
Yarn System	100% Recycled Content Nylon
Color System	100% Solution Dyed
Construction	Tufted Textured Loop
Lifetime Antimicrobial	Intersept®
Soil/Stain Protection	Protekt <sup>2</sup> ®
Pile Thickness	0.123 in., 3.1 mm
Pile Density	6,146
Total Recycled Content	77%
Indoor Air Quality	CRI Green Label Plus #GLP0820



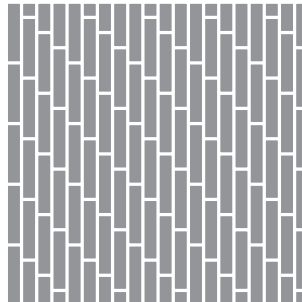
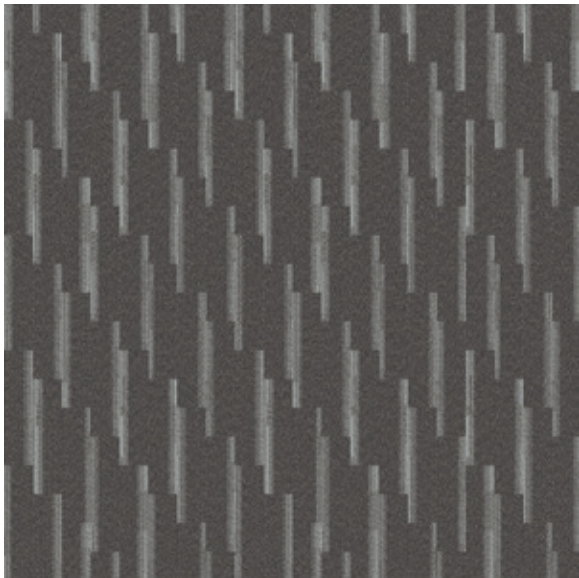
## Design Ideas

Below are floor layouts showing how to create the design ideas shared in several of the images featured in this brochure.

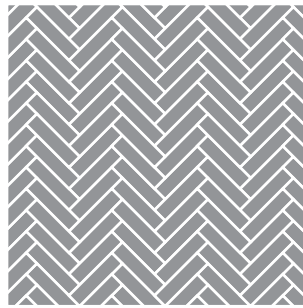
---



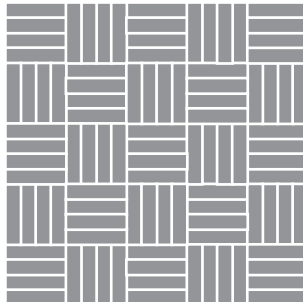
■ **PRODUCT OFF LINE** **COLOR** 104332 SAGE/BISCUIT **INSTALLED** ASHLAR  
■ **PRODUCT ON LINE** **COLOR** 103785 BISCUIT **INSTALLED** ASHLAR



■ **PRODUCT OFF LINE** **COLOR** 104336 PEPPER/CLOUD **INSTALLED** PATTERN BY TILE



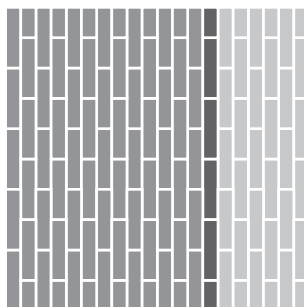
■ **PRODUCT** OFF LINE **COLOR** 104334 PEWTER/CLOUD **INSTALLED** HERRINGBONE



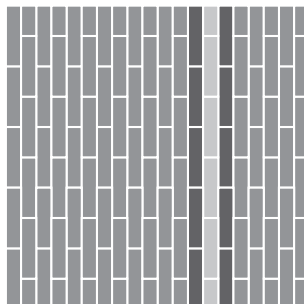
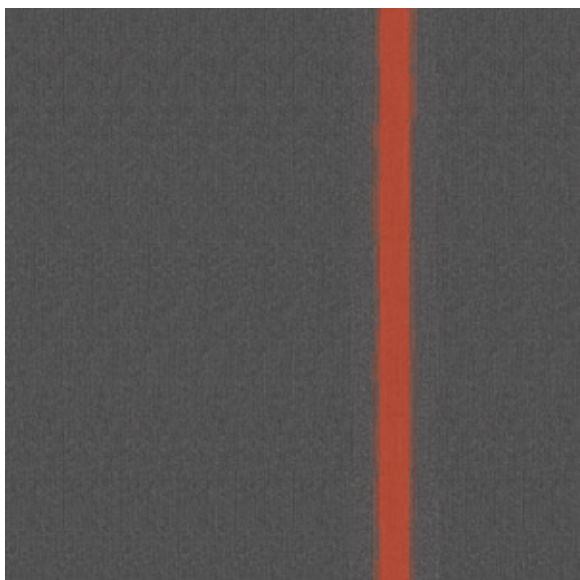
■ **PRODUCT** OFF LINE **COLOR** 104333 SAGE/CANARY **INSTALLED** PATTERN BY TILE

## Design Ideas

Below are floor layouts showing how to create the design ideas shared in several of the images featured in this brochure.

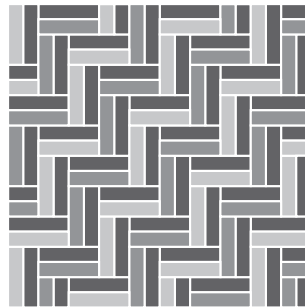
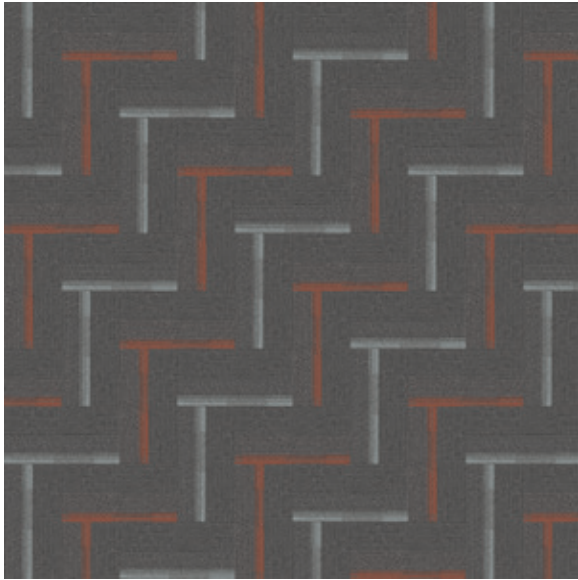


- **PRODUCT OFF LINE** COLOR 104337 PEPPER/LIME **INSTALLED** ASHLAR
- **PRODUCT ON LINE** COLOR 103798 LIME **INSTALLED** ASHLAR
- **PRODUCT ON LINE** COLOR 103788 PEPPER **INSTALLED** ASHLAR

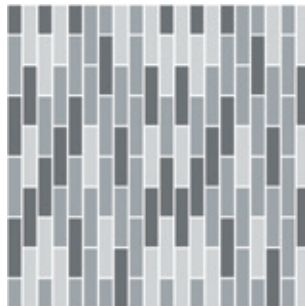
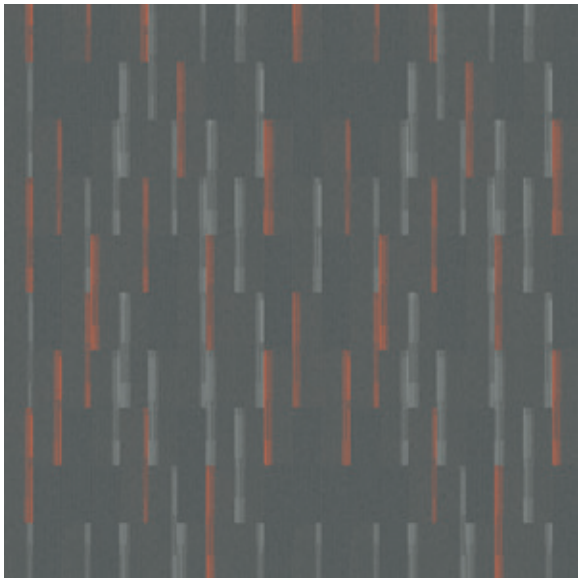


- **PRODUCT OFF LINE** COLOR 104335 PEWTER/MANDARIN **INSTALLED** ASHLAR
- **PRODUCT ON LINE** COLOR 103787 PEWTER **INSTALLED** ASHLAR
- **PRODUCT ON LINE** COLOR 103803 MANDARIN **INSTALLED** ASHLAR





- **PRODUCT ON LINE** **COLOR** 103787 PEWTER **INSTALLED** PATTERN BY TILE
- **PRODUCT OFF LINE** **COLOR** 104335 PEWTER/MANDARIN **INSTALLED** PATTERN BY TILE
- **PRODUCT OFF LINE** **COLOR** 104334 PEWTER/CLOUD **INSTALLED** PATTERN BY TILE



- **PRODUCT OFF LINE** **COLORS** 104334 PEWTER/CLOUD
- **PRODUCT OFF LINE** **COLORS** 104335 PEWTER/MANDARIN
- **PRODUCT ON LINE** **COLOR** 103787 PEWTER **INSTALLED** ASHLAR

## Why Our Modular Flooring?

---



### Modular Flooring

#### *Performance and flexibility.*

Interface's standard backing systems set the industry standard for modular performance. Tiles stay on the floor with no upcurl, no tapping and no rippling effect, yet are easy to selectively replace. Our modular carpet is easier to handle than bulky roll carpet and produces an average of just 3-4% waste compared to roll carpet's average of 14%. And it installs seamlessly with our LVT, no transition strips needed.



### TacTiles™

*No glue installation.* Our revolutionary TacTiles installation system eliminates the need for glue, adhering tiles securely together to form a floor that "floats" for greater flexibility, easier replacement and long-term performance. The result? Less mess, less waste and virtually no VOCs, not to mention an environmental footprint that is over 90% lower than that of traditional glue adhesives.



### Intersept™

*Mold protection.* Our proprietary preservative, Intersept, protects our modular carpet against mold growth and odor-causing bacteria—guaranteed. Intersept treated carpet, with proper maintenance, shows no mold or bacterial growth when tested per the ASTM E2471 Standard Test Method. Intersept is EPA approved for safe use in carpet, water insoluble and contains no halogens, heavy metals, phenols or formaldehyde.

### Samples

Order samples at [www.interface.com](http://www.interface.com). You'll receive email order confirmations, 24/7 access to order status and more. Not near a computer? You can also request samples by calling one of the numbers below.

United States  
1.877.605.1500

Canada  
1.866.398.3192

Brazil  
+ 55 11 2196 0900

Latin America  
+ 52 55 6395 5100

### [www.interface.com](http://www.interface.com)

Register at [www.interface.com](http://www.interface.com) to:

- Browse products and order samples
- View carpet in a variety of room scenes
- Browse floor designs, change colors, view as a grid or in a room, download and share
- Use our LEED Calculator
- Check order status and inventory availability
- Sign up to get the latest information on Interface products and news

### InterCircle Sample Return

Help us close the loop on the carpet sampling process. Through our InterCircle Sample Return program, sample materials stay out of the landfill and are re-used as samples until it is time to recycle them into new carpet. By reducing sample production material and diverting old materials from the landfill, we can reduce our overall environmental footprint.

Call 1.877.605.1500 (U.S.) or 1.866.398.3192 (Canada) to order a sample return bag with a prepaid return label.



### ReEntry™

*Recyclable is now a reality.* Through our ReEntry program and partnerships with our fiber suppliers and recycling centers throughout North America, separated Type 6 and 6,6 nylon are recycled into new 6 and 6,6 nylon while separated GlasBac™, GlasBacRE, similar competitive backings and our own LVT are recycled into new GlasBacRE non-virgin PVC backing using our Cool Blue™ technology. The result? Products with up to 89% total recycled content, including as much as 27% post-consumer content.



### Sustainable Choice

*Environmental responsibility.* More than 95% of Interface products manufactured in the Americas carry the GreenCircle Certified Environmental Facts label, which has verified that standard Interface products are manufactured using 99% renewable energy and offer a minimum of 66% and 80% total recycled content when backed with GlasBac and GlasBacRE backing respectively.

Transparency and certified sustainability leadership come standard on all Interface products, including published ingredients in HPDs (Health Product Declarations) or Declare Labels. In addition, more than 99% of our products globally have a published EPD (Environmental Product Declaration), which evaluates consistent factors based on full life cycle assessment (LCA). And, all Interface products with GlasBacRE backing are certified to the Platinum level of the NSF/ANSI 140 Sustainable Assessment for Carpet. GlasBac backed products meet the Gold level. NSF/ANSI 140 certified products contribute toward a USGBC or CaGBC LEED credit.

**Third Party Certification**  
*Our Carbon Neutral Floors™ program is annually verified by a third party.*



**Environmental Product Declaration (EPD)** – A statement of product ingredients and environmental impacts over the entire life cycle of a product. A comprehensive life cycle assessment (LCA) is performed to ISO standards to develop an EPD, after which both the EPD and LCA must be third party verified.



NSF Certified  
NSF/ANSI 140 - 2007a  
Content@Certification.com

**Sustainable Assessment for Carpet** – The only carpet sustainability standard in North America that evaluates the environmental impact of carpet for its entire lifecycle.



**CRI Green Label Plus** – An independent testing program that identifies carpet and adhesives with very low emissions of VOCs to help improve indoor air quality.



Printed on 50% post consumer waste (PCW) fiber manufactured using wind power.

We have tried our very best to accurately represent product colors. However, due to the nature of printed materials, color of actual products may vary slightly. Please request a sample to see actual product color.

All product specifications reflect averages derived from product sample testing, are subject to normal manufacturing and testing tolerances and inherent pattern variances, and may be changed without notice. For more information about these and other important attributes of the product(s) described herein, including recycled content and product warranty information, please see [www.interface.com/disclaimer](http://www.interface.com/disclaimer).

[www.interface.com](http://www.interface.com)

**United States Headquarters**

1503 Orchard Hill Road  
LaGrange, GA 30240  
1.800.336.0225 ext.56511

**Canadian Headquarters**

233 Lahr Drive  
Belleville, ON K8N 5S2  
1.800.267.2149 ext.52128

**Latin American Headquarters**

Montes Urales # 415 Piso 6  
Col. Lomas de Chapultepec  
México City, D.F. 11000  
Mexico  
+ 52 55 6395 5100

12/2020



Climate change is undeniable. And reversible. Our mission is to prove it. **Join the #ClimateTakeBack and help create a climate fit for life.**