

[www.interface.com](http://www.interface.com)

**United States Headquarters**

1280 West Peachtree Street NW  
Atlanta, GA 30309  
1.800.634.6032

**Canadian Headquarters**

233 Lahr Drive  
Belleville, ON K8N 5S2  
1.800.267.2149 ext.52128

**Brazilian Headquarters**

Rua Surubim, 577 - Conjuntos  
73/74 7º Andar  
04571-050 - São Paulo - SP  
+ 55 11 2196 0900

**Latin American Headquarters**

Montes Urales # 415 Piso 6  
Col. Lomas de Chapultepec  
Mexico City, CDMX 11000  
Mexico  
+ 52 55 5520 0195  
+ 52 55 2791 6812

CIM # IFS00838 02/2020



Climate change is undeniable. And reversible. Our mission is to prove it.  
**Join the #ClimateTakeBack and help create a climate fit for life.**

NY+LON Streets Collection

**Interface®**

NY+LON Streets™ Collection

Aging architecture. Technological advancement. Sustainable design. The drive to update industrial spaces with fresh interiors inspires a new modern aesthetic. An increasingly tech-connected world makes us crave human contact in spaces that feel comfortable and flexible. In this way, the office becomes its own community hub. A city within a city.

Taking its name from carpet's core material and its inspiration from two of the world's iconic cities, NY+LON Streets™ is a playful carpet collection that encourages a new perspective on urban exploration. Wheler Street™, Old Street™, Dover Street™, and Reade Street™ interpret familiar textures in a variety of scales. Mercer Street™ embraces an unconventional grid pattern, which Broome Street™ punches up with contemporary color. Altogether, the collection brings new meaning to the phrase, "Take to the streets."

As part of our global product portfolio, each style in NY+LON Streets is carbon neutral. Impactful on the floor. Impactful on the planet. **Carbon Neutral Floors™.**



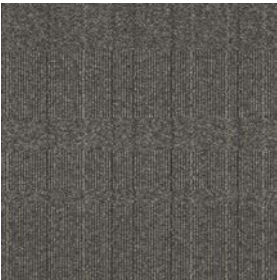
Old Street™ Colorline



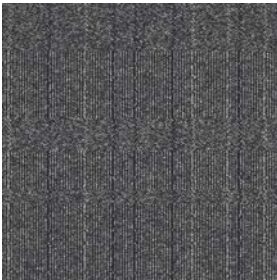
105738 CONCRETE GRID



105739 BROWN GRID



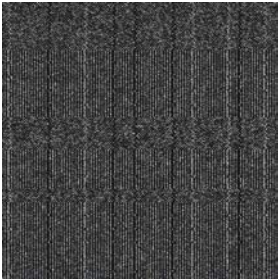
105740 IRON GRID



105741 STEEL GRID



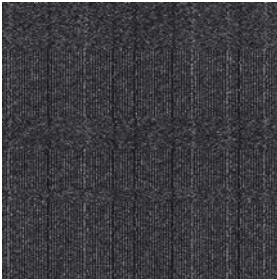
105742 METAL GRID



105743 GRAPHITE GRID



105744 SLATE GRID



105745 BLACK GRID

Specifications

Modular, 50cm x 50cm	1427302500
Backing System	GlasBac® Tile
Yarn Manufacturer	Universal
Yarn System	Post-Consumer Content Nylon
Color System	100% Solution Dyed
Construction	Tufted Pattern Loop
Preservative Protection	Intersept®
Soil/Stain Protection	Protekt <sup>2</sup> ®
Pile Thickness	0.062 in., 1.6 mm
Pile Density	10,452
Total Recycled Content	72%
Indoor Air Quality	CRI Green Label Plus #GLP0820



PRODUCT OLD STREET    COLORS 105738 CONCRETE GRID, 105742 METAL GRID    INSTALLED MONOLITHIC



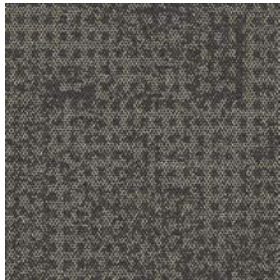
Wheler Street™ Colorline



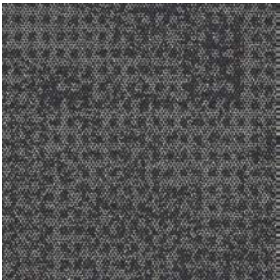
105649 CONCRETE SQUARE



105650 BROWN SQUARE



105651 IRON SQUARE



105652 STEEL SQUARE



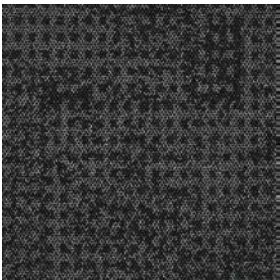
105653 METAL SQUARE



105654 GRAPHITE SQUARE



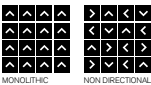
105655 SLATE SQUARE



105656 BLACK SQUARE

Specifications

Modular, 50cm x 50cm	1473702500
Backing System	GlasBac® Tile
Yarn Manufacturer	Universal
Yarn System	Post-Consumer Content Nylon
Color System	100% Solution Dyed
Construction	Tufted Textured Loop
Preservative Protection	Intersept®
Soil/Stain Protection	Protekt2®
Pile Thickness	0.099 in., 2.5 mm
Pile Density	6,909
Total Recycled Content	72%
Indoor Air Quality	CRI Green Label Plus #GLP0820



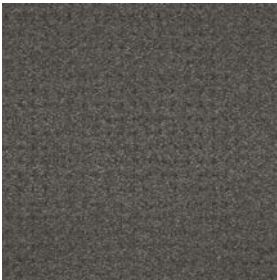
Dover Street™ Colorline



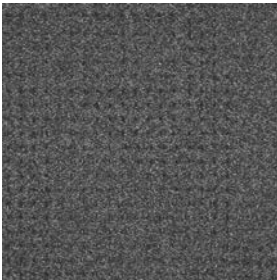
105746 CONCRETE DOT



105747 BROWN DOT



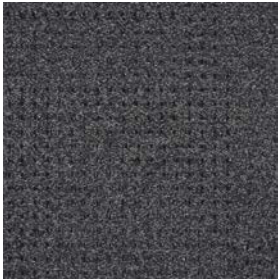
105748 IRON DOT



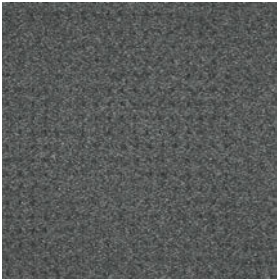
105749 STEEL DOT



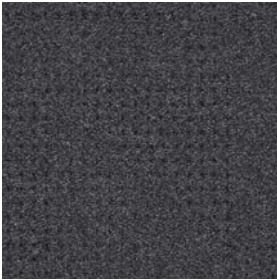
105750 METAL DOT



105751 GRAPHITE DOT



105752 SLATE DOT



105753 BLACK DOT

Specifications

Modular, 50cm x 50cm	1427502500
Backing System	GlasBac® Tile
Yarn Manufacturer	Universal
Yarn System	Post-Consumer Content Nylon
Color System	100% Solution Dyed
Construction	Tufted Pattern Loop
Preservative Protection	Intersept®
Soil/Stain Protection	Protekt2®
Pile Thickness	0.075 in., 1.9 mm
Pile Density	11,520
Total Recycled Content	72%
Indoor Air Quality	CRI Green Label Plus #GLP0820



PRODUCT DOVER STREET COLOR 105746 CONCRETE DOT INSTALLED MONOLITHIC



Reade Street™ Colorline



105754 CONCRETE PLATE



105755 BROWN PLATE



105756 IRON PLATE



105757 STEEL PLATE



105758 METAL PLATE



105759 GRAPHITE PLATE



105760 SLATE PLATE



105761 BLACK PLATE

Specifications

Modular, 50cm x 50cm	1427802500
Backing System	GlasBac® Tile
Yarn Manufacturer	Universal
Yarn System	Post-Consumer Content Nylon
Color System	100% Solution Dyed
Construction	Tufted Pattern Loop
Preservative Protection	Intersept®
Soil/Stain Protection	Protekt <sup>2</sup> ®
Pile Thickness	0.096 in., 2.4 mm
Pile Density	9,000
Total Recycled Content	72%
Indoor Air Quality	CRI Green Label Plus #GLP0820



Mercer Street™ Colorline



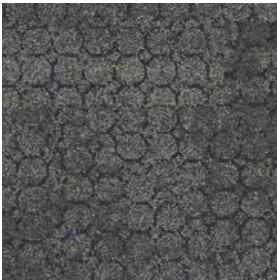
105762 CONCRETE CIRCLE



105763 BROWN CIRCLE



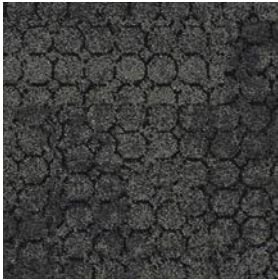
105764 IRON CIRCLE



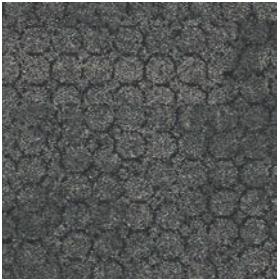
105765 STEEL CIRCLE



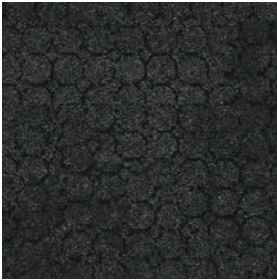
105766 METAL CIRCLE



105767 GRAPHITE CIRCLE



105768 SLATE CIRCLE



105769 BLACK CIRCLE

Specifications

Modular, 50cm x 50cm	1427902500
Backing System	GlasBac® Tile
Yarn Manufacturer	Universal
Yarn System	Post-Consumer Content Nylon
Color System	100% Solution Dyed
Construction	Tufted Pattern Loop
Preservative Protection	Intersept®
Soil/Stain Protection	Protekt2®
Pile Thickness	0.090 in., 2.3 mm
Pile Density	9,200
Total Recycled Content	72%
Indoor Air Quality	CRI Green Label Plus #GLP0820



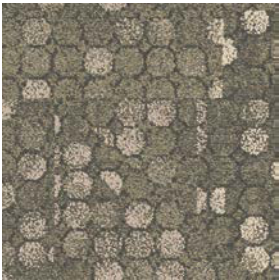
MONOLITHIC



PRODUCT MERCER STREET COLOR 105763 BROWN CIRCLE INSTALLED MONOLITHIC



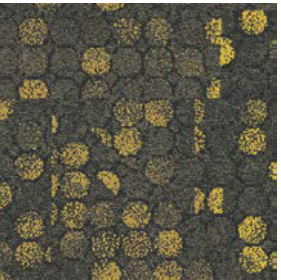
## Broome Street™ Colorline



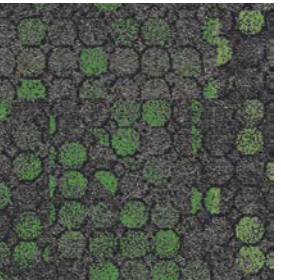
106210 CORAL GLASS



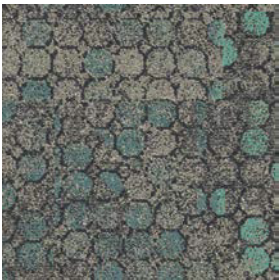
106211 BRICK GLASS



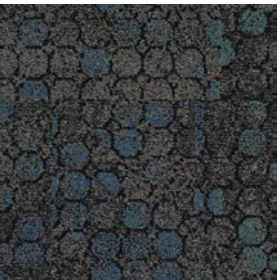
106212 YELLOW GLASS



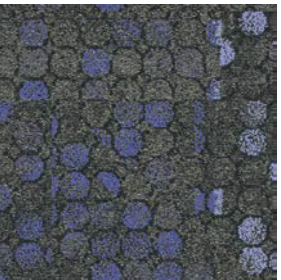
106213 GREEN GLASS



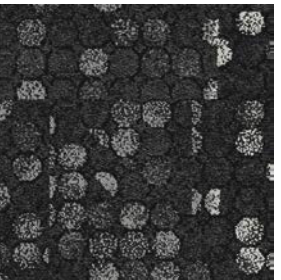
106214 TURQUOISE GLASS



106215 TEAL GLASS



106216 BLUE GLASS



106217 BLACK GLASS

## Specifications

Modular, 50cm x 50cm	1417302500
Backing System	GlasBac® Tile
Yarn Manufacturer	Universal
Yarn System	Post-Consumer Content Nylon
Color System	100% Solution Dyed
Construction	Tufted Pattern Loop
Preservative Protection	Intersept®
Soil/Stain Protection	Protekt2®
Pile Thickness	0.092 in., 2.3 mm
Pile Density	10,957
Total Recycled Content	72%
Indoor Air Quality	CRI Green Label Plus #GLP0820



# Interface Design Studio

The Interface Design Studio is a fully complimentary service intended to help designers at any phase of a project. With a deep knowledge of Interface products, our team of trained concept designers saves you time by focusing on the foundation of every design project — the floor.

# Carbon Neutral Floors™

Reduce your carbon footprint. All of the flooring products that we sell—carpet tile, lvt and rubber—are carbon neutral. By choosing Interface and Carbon Neutral Floors™, you can see exactly how much a floor is contributing to the reduction of global warming. No compromising on performance. No compromising the planet.



Why Our Modular Flooring?



Modular Flooring

*Performance and flexibility.* Interface's standard backing systems set the industry standard for modular performance. Tiles stay on the floor with no upcurl, no tapping and no rippling effect, yet are easy to selectively replace. Our modular carpet is easier to handle than bulky roll carpet and produces an average of just 3-4% waste compared to roll carpet's average of 14%. And it installs seamlessly with our LVT, no transition strips needed.



TacTiles™

*No glue installation.* Our revolutionary TacTiles installation system eliminates the need for glue, adhering tiles securely together to form a floor that “floats” for greater flexibility, easier replacement and long-term performance. The result? Less mess, less waste and virtually no VOCs, not to mention an environmental footprint that is over 90% lower than that of traditional glue adhesives.



Intersept®

*Mold protection.* Our proprietary preservative, Intersept, protects our modular carpet against mold growth and odor-causing bacteria—guaranteed. Intersept treated carpet, with proper maintenance, shows no mold or bacterial growth when tested per the ASTM E2471 Standard Test Method. Intersept is EPA approved for safe use in carpet, water insoluble and contains no halogens, heavy metals, phenols or formaldehyde.



ReEntry™

*Recyclable is now a reality.* Through our ReEntry program and partnerships with our fiber suppliers and recycling centers throughout North America, separated Type 6 and 6,6 nylon are recycled into new 6 and 6,6 nylon while separated GlasBac™, GlasBacRE, similar competitive backings and our own LVT are recycled into new GlasBacRE non-virgin PVC backing using our Cool Blue™ technology. The result? Products with up to 89% total recycled content, including as much as 27% post-consumer content.



Sustainable Choice

*Environmental responsibility.* More than 95% of Interface products manufactured in the Americas carry the GreenCircle Certified Environmental Facts label, which has verified that standard Interface products are manufactured using 99% renewable energy and offer a minimum of 66% and 80% total recycled content when backed with GlasBac and GlasBacRE backing respectively.

Transparency and certified sustainability leadership come standard on all Interface products, including published ingredients in HPDs (Health Product Declarations) or Declare Labels. In addition, more than 99% of our products globally have a published EPD (Environmental Product Declaration), which evaluates consistent factors based on full life cycle assessment (LCA). And, all Interface products with GlasBacRE backing are certified to the Platinum level of the NSF/ANSI 140 Sustainable Assessment for Carpet. GlasBac backed products meet the Gold level. NSF/ANSI 140 certified products contribute toward a USGBC or CaGBC LEED credit.

**Third Party Certification**  
*Our Carbon Neutral Floors program is annually verified by a third party.*



**Environmental Product Declaration (EPD)** – A statement of product ingredients and environmental impacts over the entire life cycle of a product. A comprehensive life cycle assessment (LCA) is performed to ISO standards to develop an EPD, after which both the EPD and LCA must be third party verified.



**Sustainable Assessment for Carpet** – The only carpet sustainability standard in North America that evaluates the environmental impact of carpet for its entire lifecycle.



**CRI Green Label Plus** – An independent testing program that identifies carpet and adhesives with very low emissions of VOCs to help improve indoor air quality.

Samples

Order samples at [www.interface.com](http://www.interface.com). You'll receive email order confirmations, 24/7 access to order status and more. Not near a computer? You can also request samples by calling one of the numbers below.

United States 1.877.605.1500  
Canada 1.866.398.3192

Brazil + 55 11 2196 0900  
Latin America + 52 55 5520 0195

[www.interface.com](http://www.interface.com)

Register at [www.interface.com](http://www.interface.com) to:

- Browse products and order samples
- View carpet in a variety of room scenes
- Browse floor designs, change colors, view as a grid or in a room, download and share
- Use our LEED Calculator
- Check order status and inventory availability
- Sign up to get the latest information on Interface products and news

InterCircle Sample Return

Help us close the loop on the carpet sampling process. Through our InterCircle Sample Return program, sample materials stay out of the landfill and are re-used as samples until it is time to recycle them into new carpet. By reducing sample production material and diverting old materials from the landfill, we can reduce our overall environmental footprint.

Call 1.877.605.1500 (U.S.) or 1.866.398.3192 (Canada) to order a sample return bag with a prepaid return label.

All product specifications reflect averages derived from product sample testing, are subject to normal manufacturing and testing tolerances and inherent pattern variances, and may be changed without notice. For more information about these and other important attributes of the product(s) described herein, including recycled content and product warranty information, please see [www.interface.com/disclaimer](http://www.interface.com/disclaimer).



Printed on 50% post consumer waste (PCW) fiber manufactured using wind power.

We have tried our very best to accurately represent product colors. However, due to the nature of printed materials, color of actual products may vary slightly. Please request a sample to see actual product color.