



Fresco Valley  
Collection | LVT

Cliff  
Great Heights  
Ridge

Interface®

**For beautifully uplifting LVT, nature works.**

Step into Fresco Valley, a beautifully unique collection of LVT that integrates exquisite, natural detail into three original designs.

Cliff™ expresses flowing layers of stone, stippled with organic texture. Ridge™ reveals shimmering seams of water, angling across rocky minerals. And Great Heights™, with its rich, glowing woodgrain textures, varies in tone across expanding spaces.

Unique patterns born from nature, with sophisticated hues designed to enrich and enliven enjoyable interior spaces.



## Specifications

Product Number	A024
4.5 mm	C008
3.0 mm	
Product Construction	High Performance Luxury Vinyl Tile
Class/ASTM F 1700	Class III Printed Vinyl Tile
Wear Layer Thickness	22 mil
Total Thickness	4.5 mm and 3.0 mm options available
Backing Class	Commercial Grade
Finish	Ceramor™ Coating
Nominal Dimensions	25 cm x 1 m (9.845 in x 39.38 in)
Total Recycled Content (Pre Consumer)	39%
Indoor Air Quality	GREENGUARD Gold FloorScore® Certified CDPH 01350 Compliant NSF/ANSI 332 Silver Contributes to multiple IEQ and MR credits
Environmental Certifications	
LEED v4	

*View the full product specification on [interface.com](https://www.interface.com)*

## Installation Methods



ASHLAR



HERRINGBONE

## Ready for More?

Find the latest color options, formats and full specifications on [Interface.com](https://www.interface.com). Create an account or login to take the next step for your project.

4.5 mm LVT



**CHECK AVAILABILITY**  
**ORDER SAMPLES**

3.0 mm LVT



**CHECK AVAILABILITY**  
**ORDER SAMPLES**

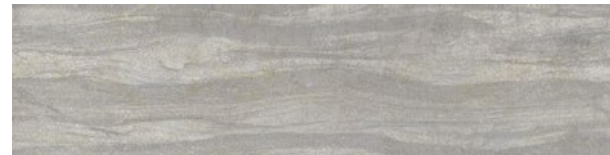
## Cliff™ Color Range



4.5 mm A02401 LAPIS



4.5 mm A02402 SANDSTONE



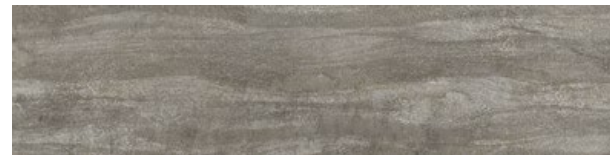
4.5 mm A02403 LIMESTONE  
3.0 mm C00802 LIMESTONE



4.5 mm A02404 ALABASTER  
3.0 mm C00801 ALABASTER



4.5 mm A02405 GRANITE



4.5 mm A02406 IRONSTONE





## Specifications

Product Number	A025
4.5 mm	
Product Construction	High Performance Luxury Vinyl Tile
Class/ASTM F1700	Class III Printed Vinyl Tile
Wear Layer Thickness	22 mil
Total Thickness	4.5 mm
Backing Class	Commercial Grade
Finish	Ceramor™ Coating
Nominal Dimensions	25 cm x 1 m (9.845 in x 39.38 in)
Total Recycled Content (Pre Consumer)	39%
Indoor Air Quality	GREENGUARD Gold FloorScore® Certified CDPH 01350 Compliant
Environmental Certifications	NSF/ANSI 332 Silver
LEED v4	Contributes to multiple IEQ and MR credits

*View the full product specification on [interface.com](https://www.interface.com)*

## Installation Methods



ASHLAR



HERRINGBONE

## Ready for More?

Find the latest color options, formats and full specifications on [Interface.com](https://www.interface.com). Create an account or login to take the next step for your project.

4.5 mm LVT



**CHECK AVAILABILITY**  
**ORDER SAMPLES**

## Great Heights™ Color Range



4.5 mm A02501 GREY PINE



4.5 mm A02502 HARD MAPLE



4.5 mm A02503 WHITE OAK



4.5 mm A02504 DOUGLAS FIR



4.5 mm A02505 SEQUOIA



4.5 mm A02506 BIRCH

## Specifications

Product Number	A023
4.5 mm	
Product Construction	High Performance Luxury Vinyl Tile
Class/ASTM F1700	Class III Printed Vinyl Tile
Wear Layer Thickness	22 mil
Total Thickness	4.5 mm
Backing Class	Commercial Grade
Finish	Ceramor™ Coating
Nominal Dimensions	50 cm x 50 cm (19.69 in x 19.69 in)
Total Recycled Content (Pre Consumer)	39%
Indoor Air Quality	GREENGUARD Gold FloorScore® Certified CDPH 01350 Compliant
Environmental Certifications	NSF/ANSI 332 Silver
LEED v4	Contributes to multiple IEQ and MR credits

[View the full product specification on interface.com](#)

## Installation Methods



## Ready for More?

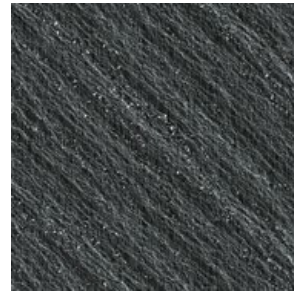
Find the latest color options, formats and full specifications on [Interface.com](#). Create an account or login to take the next step for your project.

4.5 mm LVT

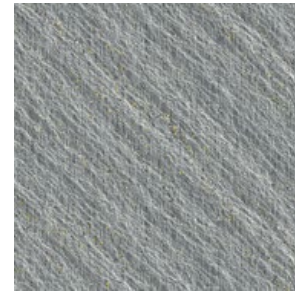


**CHECK AVAILABILITY**  
**ORDER SAMPLES**

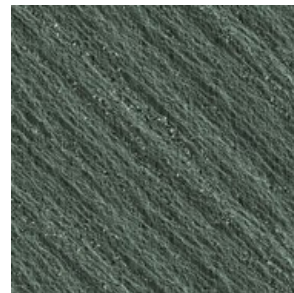
## Ridge™ Color Range



4.5 mm A02301 PHANTOM



4.5 mm A02302 SHADE



4.5 mm A02303 SAGE



4.5 mm A02304 AGATE



4.5 mm A02305 MUSHROOM



4.5 mm A02306 BOULDER



## Why Our Modular Resilient LVT?



### Integrated System

*Save time and look good doing it.* Our LVT integrates with our full product portfolio, allowing you to streamline specification and installation. Add our modular carpet for an inset rug or nora® in an adjacent field.

For a no transition strip solution, opt for our:

- 4.5 mm LVT to any carpet tile
- 3.0 mm LVT to most 17 oz or less carpet tile on GlasBac™ or CQuest™GB backing
- 3.0 mm LVT to our nora rubber flooring



### Easy Maintenance

*Create a unique look that lasts.* Interface LVT extends the life of your floor. From simple damp mopping to selectively replacing 4.5 mm Sound Choice LVT tiles, your flooring investment will stand the test of time - beautifully and effortlessly.



### ReEntry™

*Keep flooring out of the landfill.* All of our LVT is produced with a controlled material stream, and 4.5 mm Sound Choice LVT can be reclaimed and recycled along with Interface carpet tile through our ReEntry program. ReEntry is the only third party certified recycling system among North American flooring manufacturers.



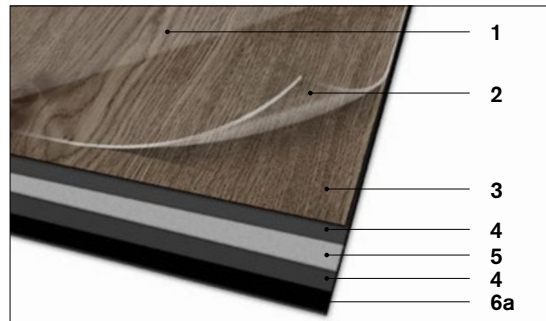
### Noise Reduction

*Silence distractions.* 4.5 mm Sound Choice is a specially formulated backing for superior noise reduction, offering you best-in-class impact sound reduction and floor to floor sound transmission.

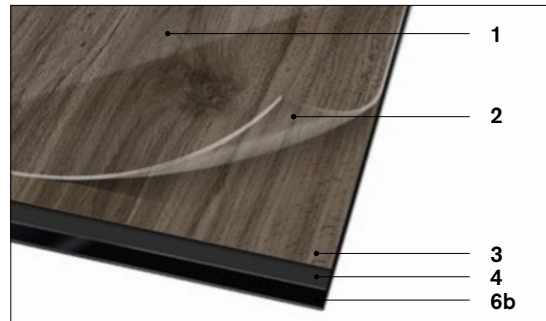


### High Performance from Top to Bottom

#### 4.5 mm Sound Choice™ LVT



#### 3.0 mm LVT



- 1. Ceramor™ Coating.** Scratch and scuff resistant, UV stabilized ceramic bead coating.
- 2. Wear Layer.** High quality, 22 mil layer enabling 15 years of resilience and performance.
- 3. Print Film.** High definition wood looks, stone looks and innovative Interface designs.
- 4. Core Sheet.** Provides stabilization and reduces telegraphing from beneath.
- 5. Fiberglass.** Adds dimensional stability and controlled flexibility.
- 6a. Sound Choice Backing.** Provides added comfort and superior acoustic performance.
- b. Backing.** Provides greater resistance to residual indentation.



### Environmental Product Declaration (EPD)

A third party verified statement of product ingredients and environmental impacts over the entire life cycle of a product.



### GREENGUARD Gold & FloorScore®

Meeting the highest standards for indoor air quality and assuring very low emissions of VOCs, Interface LVT is GREENGUARD Gold and FloorScore® Certified and CDPH 01350 compliant.



### Health Product Declaration (HPD)

A transparency tool for evaluating if a product includes materials of concern and whether it supports Green Chemistry.



### NSF/ANSI 332 Silver

This standard evaluates the environmental impact of resilient floor covering for its entire life cycle.

### 📍 Samples

Register and order samples at [interface.com](https://www.interface.com). Not near a computer? You can also request samples by calling one of the numbers below.

United States  
1.877.605.1500

Canada  
1.866.398.3192

### [interface.com](https://www.interface.com)

Do more on [interface.com](https://www.interface.com)

- Browse products and order samples
- Save and share favorites
- See images of products in a variety of room scenes
- Browse floor designs, change colors, upload your own image, download and share
- Get full specifications, sustainability certifications and more
- Check order status and inventory availability
- Sign up to get the latest information on Interface products and news

We have tried our very best to accurately represent product colors. However, due to the nature of printed materials, color of actual products may vary slightly. Please request a sample to see actual product color.

All product specifications reflect averages derived from product sample testing, are subject to normal manufacturing and testing tolerances and inherent pattern variances, and may be changed without notice. For more information about these and other important attributes of the product(s) described herein, including recycled content and product warranty information, please see [interface.com/disclaimer](https://www.interface.com/disclaimer).



PLEASE RECYCLE

Printed on 50% post consumer waste (PCW) fiber manufactured using wind power.

**interface.com**

**United States Headquarters**

1280 West Peachtree Street NW  
Atlanta, GA 30309  
1.800.634.6032

**Canadian Headquarters**

233 Lahr Drive  
Belleville, ON K8N 5S2  
1.800.267.2149 ext. 52128

CIM# IFS00958 08/2024



Climate change is undeniable. And reversible. Our mission is to prove it.  
**Join the #ClimateTakeBack and help create a climate fit for life.**