



Etched & Threaded
Collection

E610 - E616

Interface[®]

Etched & Threaded™ Collection

Made to zone-in or zen-out.

Need to focus your mind, or just let it wander? Meet Etched & Threaded, designed to bring a bit more zen to your spaces.

By weaving the warmth of luxury textiles with the geometric flow of natural stone – Etched & Threaded cuts through the hustle and bustle to create relaxing spaces you can truly sink into; with carpet tiles packed full of sustainable thinking and made to last.

From bustling breakouts to the boardroom – mix and match organic and woven patterns – available in a range of subtle colorways and modular tile shapes – to create the spaces that help you zone in or find your 'zen'.







E610 Color Range



103356 SLATE



103357 FELDSPAR



103358 SANDSTONE



103359 YELLOWSTONE

Specifications

Modular, 50 cm x 50 cm	14062
Yarn Manufacturer	Aquafil
Yarn System	100% Recycled Content Nylon
Dye Method	100% Solution Dyed
Construction	Engaged Tufted Pattern Loop
Preservative Protection	Intersept®
Soil/Stain Protection	Protekt ² ™
Pile Thickness	0.234 in, 5.9 mm
Pile Density	6,308 oz/yd ³
Total Recycled Content	74%
Indoor Air Quality	CRI Green Label Plus #GLP0820

View the full product specification on [interface.com](https://www.interface.com)

Installation Methods



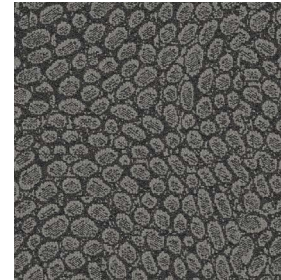
MONOLITHIC



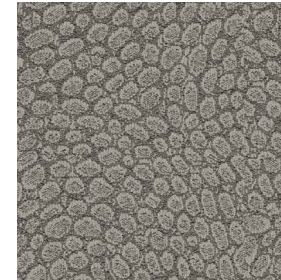
BROWSE IMAGES
ORDER SAMPLES



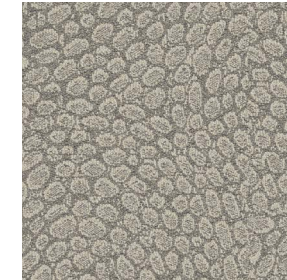
E611 Color Range



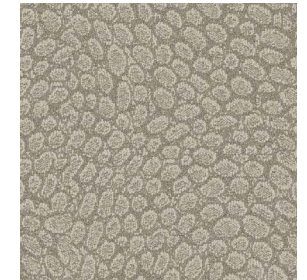
103352 GRANITE



103353 QUARTZ



103354 MARBLE



103355 LIMESTONE

Specifications

Modular, 50 cm x 50 cm	14061
Yarn Manufacturer	Aquafil
Yarn System	100% Recycled Content Nylon
Dye Method	100% Solution Dyed
Construction	Engaged Tufted Pattern Loop
Preservative Protection	Intersept®
Soil/Stain Protection	Protekt ² ™
Pile Thickness	0.175 in, 4.4 mm
Pile Density	6,377 oz/yd ³
Total Recycled Content	72%
Indoor Air Quality	CRI Green Label Plus #GLP0820

View the full product specification on [interface.com](https://www.interface.com)

Installation Methods



MONOLITHIC



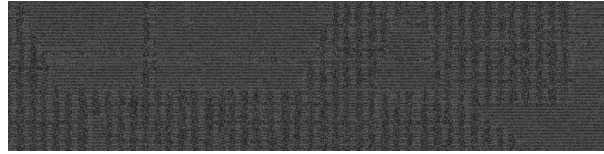
BROWSE IMAGES
ORDER SAMPLES



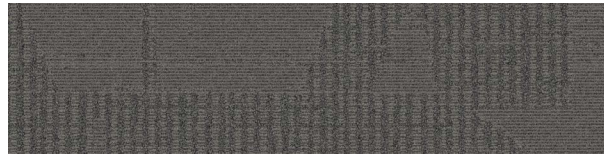
E612 Color Range



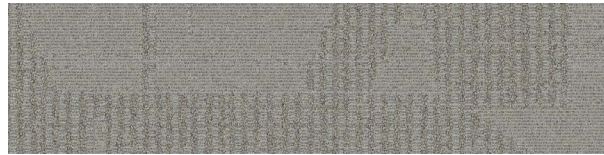
103360 UMBER



103361 MINERAL



103362 FLANNEL



103363 FOG



103364 DUSK



103365 SEPIA



103366 STRAW



103367 WHEAT

Specifications

Modular, 25 cm x 1 m	14063
Yarn Manufacturer	Aquafil
Yarn System	100% Recycled Content Nylon
Dye Method	100% Solution Dyed
Construction	Tufted Sheared
Preservative Protection	Intersept®
Soil/Stain Protection	Protek ² ™
Pile Thickness	0.172 in, 4.4 mm
Pile Density	5,442 oz/yd ³
Total Recycled Content	71%
Indoor Air Quality	CRI Green Label Plus #GLP0820

View the full product specification on [interface.com](https://www.interface.com)

Installation Methods



ASHLAR



HERRINGBONE



BROWSE IMAGES
ORDER SAMPLES

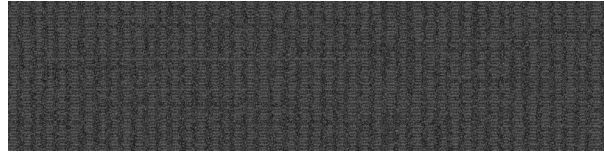


PRODUCT E612 **COLOR** 103366 STRAW **INSTALLED** ASHLAR

E613 Color Range



103368 UMBER



103369 MINERAL



103370 FLANNEL



103371 FOG



103372 DUSK



103373 SEPIA



103374 STRAW



103375 WHEAT



Specifications

Modular, 25 cm x 1 m	14064
Yarn Manufacturer	Aquafil
Yarn System	100% Recycled Content Nylon
Dye Method	100% Solution Dyed
Construction	Tufted Pattern Loop
Preservative Protection	Intersept®
Soil/Stain Protection	Protek ² ™
Pile Thickness	0.112 in, 2.8 mm
Pile Density	7,393 oz/yd ³
Total Recycled Content	70%
Indoor Air Quality	CRI Green Label Plus #GLP0820

View the full product specification on [interface.com](https://www.interface.com)

Installation Methods



ASHLAR

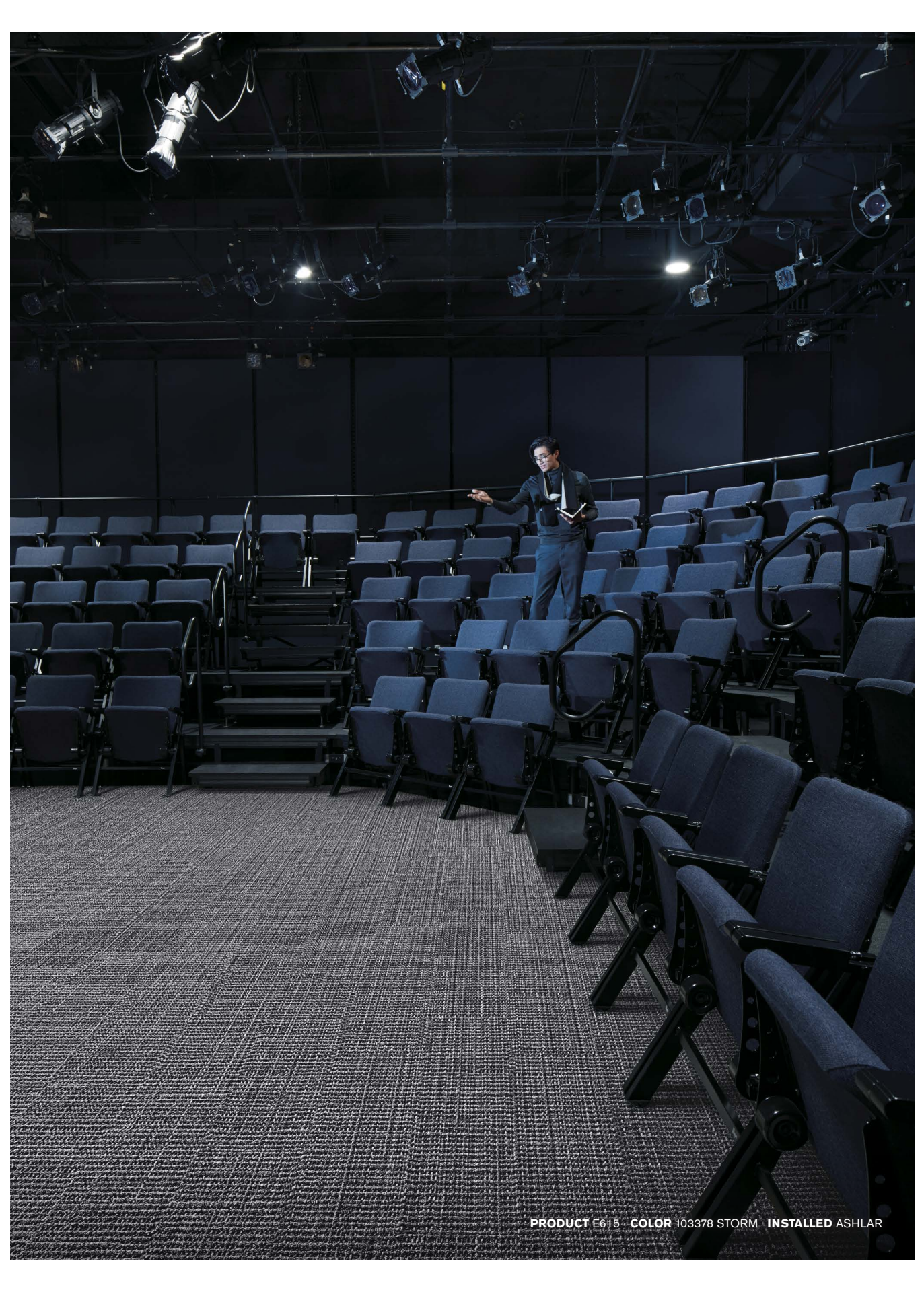


HERRINGBONE



BROWSE IMAGES
ORDER SAMPLES

PRODUCT E613 - COLORS 103371 FOG, 103370 FLANNEL - INSTALLED ASHLAR





E614 Color Range



103384 BARK



103385 CHARCOAL



103386 STORM



103387 CONCRETE



103388 BIRCH



103389 BROWNSTONE



103390 RAFFIA



103391 LINEN

Specifications

Modular, 25 cm x 1 m	14066
Yarn Manufacturer	Aquafil
Yarn System	100% Recycled Content Nylon
Dye Method	100% Solution Dyed
Construction	Tufted Pattern Loop
Preservative Protection	Intersept®
Soil/Stain Protection	Protek ² ™
Pile Thickness	0.151 in, 3.8 mm
Pile Density	6,199 oz/yd ³
Total Recycled Content	71%
Indoor Air Quality	CRI Green Label Plus #GLP0820

[View the full product specification on interface.com](#)

Installation Methods



ASHLAR



HERRINGBONE



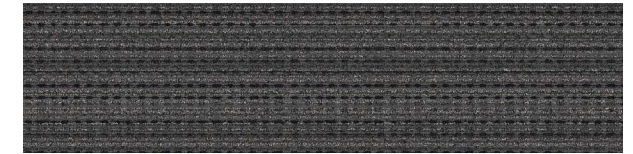
BROWSE IMAGES
ORDER SAMPLES



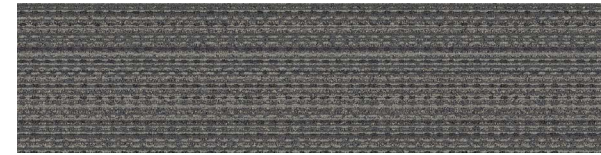
E615 Color Range



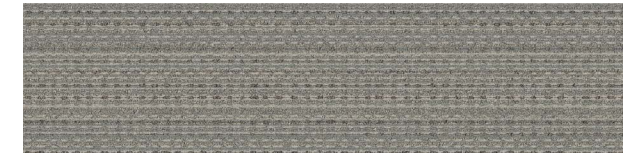
103376 BARK



103377 CHARCOAL



103378 STORM



103379 CONCRETE



103380 BIRCH



103381 BROWNSTONE



103382 RAFFIA



103383 LINEN

Specifications

Modular, 25 cm x 1 m	14065
Yarn Manufacturer	Aquafil
Yarn System	100% Recycled Content Nylon
Dye Method	100% Solution Dyed
Construction	Tufted Pattern Loop
Preservative Protection	Intersept®
Soil/Stain Protection	Protek ² ™
Pile Thickness	0.159 in, 4 mm
Pile Density	5,434 oz/yd ³
Total Recycled Content	70%
Indoor Air Quality	CRI Green Label Plus #GLP0820

[View the full product specification on interface.com](#)

Installation Methods



ASHLAR



HERRINGBONE



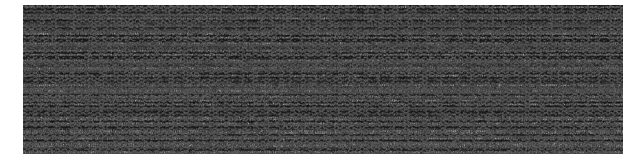
BROWSE IMAGES
ORDER SAMPLES



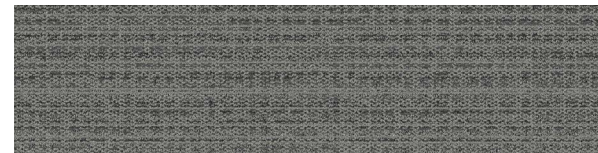
E616 Color Range



103344 WALNUT



103345 IRON



103346 PEWTER



103347 PLATINUM



103348 TIMBER



103349 WINTER



103350 JUTE



103351 PARCHMENT

Specifications

Modular, 25 cm x 1 m	13136
Yarn Manufacturer	Aquafil
Yarn System	100% Recycled Content Nylon
Dye Method	100% Solution Dyed
Construction	Tufted Textured Loop
Preservative Protection	Intersept®
Soil/Stain Protection	Protek ² ™
Pile Thickness	0.088 in, 2.2 mm
Pile Density	7,364 oz/yd ³
Total Recycled Content	69%
Indoor Air Quality	CRI Green Label Plus #GLP0820

View the full product specification on interface.com

Installation Methods



ASHLAR



HERRINGBONE



BROWSE IMAGES
ORDER SAMPLES



1- Reception

- Lab/Diagnostics

- Cafe

2- Intensive Care Unit

3- Outpatient Surgery

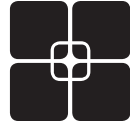
4- Family Medicine

Why Our Modular Flooring?



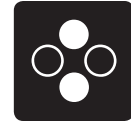
Modular Flooring

Performance and flexibility. Interface's standard backing systems set the industry standard for modular performance. Tiles stay on the floor with no upcurl, no taping and no rippling effect, yet are easy to selectively replace. Our modular carpet is easier to handle than bulky roll carpet and produces an average of just 3-4% waste compared to roll carpet's average of 14%. And it installs seamlessly with our LVT, no transition strips needed.



TacTiles™

No glue installation. Our revolutionary TacTiles installation system eliminates the need for glue, adhering tiles securely together to form a floor that “floats” for greater flexibility, easier replacement and long-term performance. The result? Less mess, less waste and virtually no VOCs, not to mention an environmental footprint that is over 90% lower than that of traditional glue adhesives. TacTiles are approved for use on GlasBac™, CQuest™GB, CQuest™Bio and CQuest™BioX.



Intersept®

Mold protection. Our proprietary preservative, Intersept, protects our modular carpet against mold growth and odor-causing bacteria—guaranteed. Intersept treated carpet, with proper maintenance, shows no mold or bacterial growth when tested per the ASTM E2471 Standard Test Method. Intersept is EPA approved for safe use in carpet, water insoluble and contains no halogens, heavy metals, phenols or formaldehyde. Intersept is standard in Interface carpet tile products backed with GlasBac, CQuestGB, ReadyBac™ and CushionBac Renew™.



Environmental Product Declaration (EPD)

A statement of product ingredients and environmental impacts over the entire life cycle of a product. A comprehensive life cycle assessment (LCA) is performed to ISO standards to develop an EPD, after which both the EPD and LCA must be third party verified.



Health Product Declaration (HPD)

A transparency tool for evaluating whether a product supports Green Chemistry. As part of our work on Health and Materials, Interface continuously reduces the environmental and health impacts of our products through elimination of materials of concern.



CRI Green Label Plus

An independent testing program that identifies carpet and adhesives with very low emissions of VOCs to help improve indoor air quality.



NSF 140 Sustainable Carpet Assessment

The only carpet sustainability standard in North America that evaluates the environmental impact of carpet for its entire life cycle.



ReEntry™

Recyclable. Through our ReEntry program we reclaim and recycle our carpet tile and Sound Choice™ LVT. ReEntry is the only third party certified recycling system among North American flooring manufacturers.



Sustainability Transparency

Transparency and certified sustainability leadership come standard on Interface products. We enlist outside partners to help us evaluate the entire product life cycle and reduce the environmental and human health impact of our flooring. And, carpet products made in our US facilities are made with 99% renewable energy.

📍 Samples

Register and order samples at [interface.com](https://www.interface.com). Not near a computer? You can also request samples by calling one of the numbers below.

United States
1.877.605.1500

Canada
1.866.398.3192

interface.com

- Do more on [interface.com](https://www.interface.com)
- Browse products and order samples
- Save and share favorites
- See images of products in a variety of room scenes
- Browse floor designs, change colors, upload your own image, download and share
- Get full specifications, sustainability certifications and more
- Check order status and inventory availability
- Sign up to get the latest information on Interface products and news

InterCircle Sample Return

Help us close the loop on the carpet sampling process. Through our InterCircle Sample Return program, sample materials stay out of the landfill and are re-used as samples until it is time to recycle them into new carpet. By reducing sample production material and diverting old materials from the landfill, we can reduce our overall environmental footprint.

Call 1.877.605.1500 (U.S.) or 1.866.398.3192 (Canada) to order a sample return bag with a prepaid return label.

We have tried our very best to accurately represent product colors. However, due to the nature of printed materials, color of actual products may vary slightly. Please request a sample to see actual product color.

All product specifications reflect averages derived from product sample testing, are subject to normal manufacturing and testing tolerances and inherent pattern variances, and may be changed without notice. For more information about these and other important attributes of the product(s) described herein, including recycled content and product warranty information, please see [interface.com/disclaimer](https://www.interface.com/disclaimer).



PLEASE RECYCLE

Printed on 50% post consumer waste (PCW) fiber manufactured using wind power.

interface.com

United States Headquarters

1280 West Peachtree Street NW
Atlanta, GA 30309
1.800.634.6032

Canadian Headquarters

233 Lahr Drive
Belleville, ON K8N 5S2
1.800.267.2149 ext. 52128

CIM# IFS00943 06/2024



Climate change is undeniable. And reversible. Our mission is to prove it.
Join the #ClimateTakeBack and help create a climate fit for life.