

Earthen Forms Collection | LVT

Crossroads
Hearth
On Grain

Interface®

Made for switching-on and chilling-out.

Need space to kick your brain into high gear, or a chill-out zone to unwind? Meet Earthen Forms, designed for spaces with a bit more zen.

By tapping into the warmth of natural woodgrain and the cool textures of travertine stone, Earthen Forms brings the great outdoors indoors. It's LVT packed with 39% recycled content and made to last.

From lively meeting rooms to quiet focus zones, let your imagination run wild with 3 intricate, organic designs – available in a range of neutral hues and modular tile shapes – for spaces that help you switch on or chill out.





PRODUCT ON GRAIN COLOUR SMOKEY ASH INSTALLED ASHLAR
PRODUCT ETCHED & THREADED E612 COLOUR WHEAT INSTALLED ASHLAR



Crossroads Colour Range



A03401 CORNERSTONE



A03402 MATERIA



A03403 STEPPING STONE



A03404 STRATA



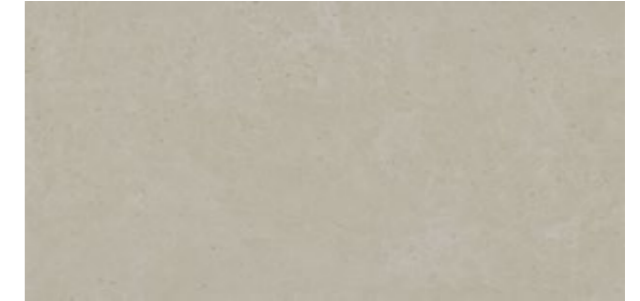


LVT PRODUCT HEARTH COLOUR GRIS INSTALLED ASHLAR
CARPET PRODUCT ETCHED & THREADED E615 COLOUR LINEN INSTALLED ASHLAR

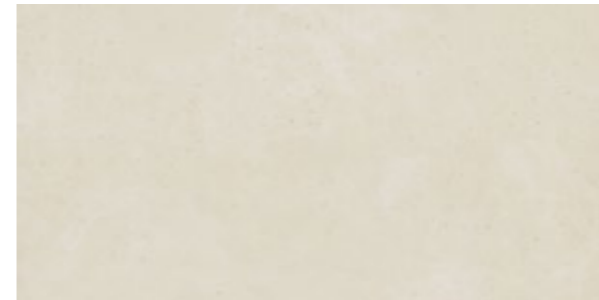
Hearth Colour Range



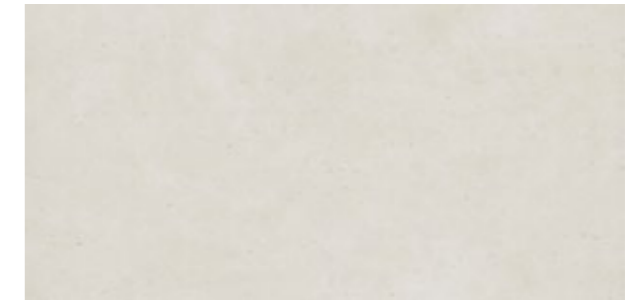
A03501 PETRA



A03502 GRIS



A03503 SANDSTONE



A03504 MARBLE DUST

On Grain Colour Range



A03301 WHITE OAK VENEER



A03302 EUROPEAN WALNUT



A03303 HONEYED OAK



A03304 OILED WALNUT



A03305 BESPOKE TIMBER



A03306 GOLDEN OAK



A03307 PALE ASH



A03308 SMOKEY ASH





LVT PRODUCT CROSSROADS COLOUR CORNERSTONE INSTALLED ASHLAR
CARPET PRODUCT ETCHED & THREADED E616 COLOUR JUTE INSTALLED ASHLAR



PRODUCT HEARTH COLOUR SANDSTONE INSTALLED ASHLAR



Specifications

Earthen Forms Collection | LVT

| | |
|---------------------------------|---|
| Product Name / Number | On Grain - A033 Crossroads - A034 Hearth - A035 |
| Product Construction | High Performance Luxury Vinyl Tile |
| Wear Layer Thickness | 0.55 mm |
| Total Thickness (Metric) | 4.5 mm |
| Classification | ISO 10874 Class 33 (heavy contract) ISO 10874 Class 42 (light industrial general) |
| Acoustic Impact Noise Reduction | ISO 10140-3 $\Delta L_w = 16dB$ |
| Finish | CERAMOR+™ UV Stabilized Ceramic Bead Coating |
| Nominal Dimensions | On Grain - A033 - 25 x 100 cm Crossroads - A034 - 25 x 100 cm Hearth - A035 - 50 x 100 cm |

Performance Specifications

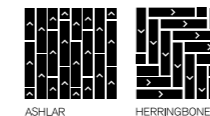
| | | |
|-------------------------|--------------------|------------------------|
| Critical Heat Flux | AS ISO 9239-1 | >7kW/m ² |
| Smoke Rate | AS ISO 9239-1 | <750%.min |
| Size, Tolerance | ISO 24342 | >400 mm < 0.35 mm |
| | ISO 24342 | <400 mm < 0.25 mm |
| Dimensional Stability | ISO 23999 | <0.25% |
| Thickness | ISO 24346 | Average value + 0.20mm |
| Resistance to Light | ISO 105-B02 | ≥6 |
| Resistance to Heat | ASTM F1514 | $\Delta E < 8$ avg Max |
| Resistance to Chemicals | EN-ISO 26987 | Pass |
| Reaction to Fire | EN ISO 13501-1 | Class Bfl-S1 |
| VOC Test | ISO 10580 | Pass |
| Flexibility | ISO 24344 Method A | Pass |
| Static Load | ASTM F970 | ≤0.005" with 1500 psi |
| Castor chair | ISO 4918 | Pass |
| Thermal Conductivity | EN 12667 | 0.16 W/mK |
| Static Electrical | EN 1815 | <2kV |
| Slip Resistance | AS 4586-2013 | P3 / R10 |

Environmental Specifications

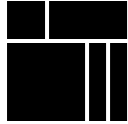
| | |
|------------------------------------|--|
| Total Recycled Content | 39% |
| Ingredients and Life Cycle Impacts | EPD for LVT |
| Sustainability Assessment | NSF/ANSI 332, Meets Certification Guidelines |
| LEED v4 | Contributes to IEQ: Low Emitting Materials; M&R: EPD and EPR |
| Global Green Tag | Green Rate Level A |

Technical Information

| | |
|----------------------|--|
| Installation | See Interface LVT Installation Guidelines online |
| Maintenance | See Interface LVT Maintenance Guidelines online |
| Warranty | 15 Year Standard LVT Product Warranty |
| Installation Methods | Ashlar, Herringbone |



Why Our Modular Resilient Sound Choice™ LVT?



Integrated System

Say goodbye to transition strips and doubling up. Our modular resilient floorings are made to work as a system with our modular carpet tile. The compatible size and height of our products allow you to integrate modular carpet for an inset rug or an adjacent field – no transition strip required. You'll avoid doubling up on materials and save cost.



Easy Maintenance

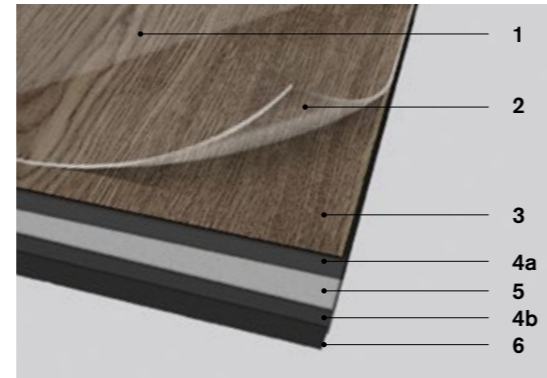
Create a unique look that lasts. Interface Sound Choice LVT extends the life of your floor. From simple maintenance like damp mopping to selectively replacing damaged tiles, your flooring investment will stand the test of time - beautifully and effortlessly.



Noise Reduction

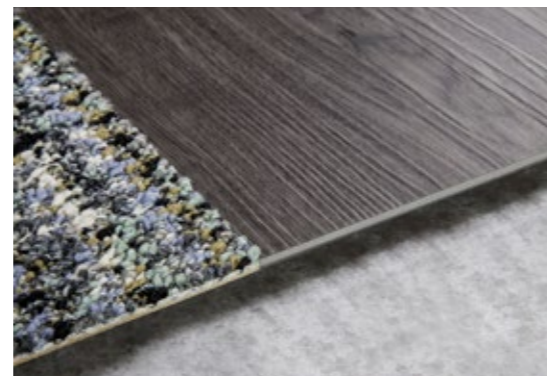
Less distractions. Sound Choice is a specially formulated backing for superior noise reduction, offering high levels of impact sound reduction.

High Performance from Top to Bottom



- 1. Ceramor™+ Coating.** Minimizes everyday scratching and scuffing and also provides enhanced slip resistance.
- 2. Wear Layer.** High quality layer enabling 15 years of resilience and performance.
- 3. Print Film.** Provides outstanding visuals of natural materials and Interface innovative designs.
- 4. Core Sheet.** Creates thickness for a stronger core and reduces telegraphing from beneath.
- 5. Fiberglass.** Adds dimensional stability and controlled flexibility.
- 7. Sound Choice™ Backing.** Provides comfort and superior acoustic performance.

Interface Sound Choice LVT and carpet tile allow you to seamlessly move from hard to soft surfaces. No transition strip needed.



Environmental Product Declaration (EPD)

Interface LVT products are covered by an EPD. An EPD provides a comprehensive statement of product ingredients and environmental impacts based upon life cycle assessment performed to ISO standards.



GREENGUARD Gold & FloorScore®

Meeting the highest standards for indoor air quality and assuring very low emissions of VOCs, Interface LVT is GREENGUARD Gold and FloorScore® Certified and CDPH 01350 compliant.



NSF/ANSI 332 Silver

This standard evaluates the environmental impact of resilient floor covering for its entire life cycle.



Global GreenTag GreenRate - Level A

Global GreenTag's GreenRate certification is a product rating system recognised by the Green Building Council of Australia and Green Building Council of New Zealand. Its assessment scheme aligns to the Green Star® Responsible Products program. All Interface products are certified "Level A".



Best Practice Guidelines for PVC

Our product proudly holds the Best Environmental Practice (BEP) PVC certification, a recognition of compliance with stringent environmental and social criteria in PVC manufacturing. This certification is a key contributor to Green Star certification, aligning with the GBCA's Responsible Products Framework. Our commitment to BEP guidelines demonstrates our dedication to environmental responsibility and product excellence.

Do more on [interface.com](https://www.interface.com)

- Browse products, save and share favourites
- See images of products in a variety of room scenes
- Browse floor designs, change colours, upload your own image, download and share
- Get full specifications, sustainability certifications and more
- Sign up to get the latest information on Interface products and news

Our EPDs and certifications contribute credits towards Green Building Council's Green Star® Responsible Products program.

Green Star is the Green Building Council of Australia's sustainability rating system for the built environment. It is used to rate new and existing buildings, new fit-outs, and new precinct developments. The Green Building Council of Australia recognises Responsible Products that may contribute to a Green Star rating through its Responsible Credits.

We have tried our very best to accurately represent product colours. However, due to the nature of printed materials, colour of actual products may vary slightly. Please request a sample to see actual product colour.

Production specifications are subject to normal manufacturing tolerances and may be changed without notice. Slight variation in colour among different production lots are normal and should be considered in the overall installation plan. Products covered by manufacturer's written warranty only. All other warranties, including without limitation any implied warranties of merchantability or fitness for particular purpose, are hereby disclaimed. Contact your representative for written warranty information.

www.interface.com

Australia

Interface Australia
local toll free: 1800 804 361

India

Interface India
tel: +91 76249 17934

South East Asia

Interface Asia
tel: +65 6478 1510

South Korea

Interface South Korea
tel: +82 2 555 1734

Japan

Interface Japan
tel: +81(0)3-6892-5513

Beijing

Interface China
tel: +86 10 6590 7810

Hong Kong

Interface China
tel: +852 2802 0838

Shanghai

Interface China
tel: +86 21 6340 3868

06/2024



Climate change is undeniable. And reversible. Our mission is to prove it. **Join the #ClimateTakeBack and help create a climate fit for life.**