

Earthen Forms Collection | LVT

Crossroads
Hearth
On Grain

Interface®

Made for switching-on and chilling-out.

Need space to kick your brain into high gear, or a chill-out zone to unwind? Meet Earthen Forms, designed for spaces with a bit more zen.

By tapping into the warmth of natural woodgrain and the cool textures of travertine stone, Earthen Forms brings the great outdoors indoors. It's LVT packed with 39% recycled content and made to last.

From lively meeting rooms to quiet focus zones, let your imagination run wild with 3 intricate, organic designs – available in a range of neutral hues and modular tile shapes – for spaces that help you switch on or chill out.







Specifications

Product Number	A034
4.5 mm	High Performance Luxury Vinyl Tile
Product Construction	Class III Printed Vinyl Tile
Class/ASTM F1700	22 mil
Wear Layer Thickness	4.5 mm
Total Thickness	Commercial Grade
Backing Class	Ceramor™+ Coating
Finish	25 cm x 1 m (9.845 in x 39.38 in)
Nominal Dimensions	39%
Total Recycled Content (Pre Consumer)	GREENGUARD Gold
Indoor Air Quality	FloorScore® Certified
	CDPH 01350 Compliant
Environmental Certifications	NSF/ANSI 332 Silver
LEED v4	Contributes to multiple IEQ and MR credits

[View the full product specification on interface.com](#)

Installation Methods



ASHLAR



HERRINGBONE

Ready for More?

Find the latest color options, formats and full specifications on [Interface.com](#). Create an account or login to take the next step for your project.

4.5 mm LVT



CHECK AVAILABILITY
ORDER SAMPLES

Crossroads™ Color Range



4.5 mm A03401 CORNERSTONE



4.5 mm A03402 MATERIA



4.5 mm A03403 STEPPING STONE



4.5 mm A03404 STRATA





Specifications

Product Number	A035
4.5 mm	
Product Construction	High Performance Luxury Vinyl Tile
Class/ASTM F1700	Class III Printed Vinyl Tile
Wear Layer Thickness	22 mil
Total Thickness	4.5 mm
Backing Class	Commercial Grade
Finish	Ceramor™+ Coating
Nominal Dimensions	50 cm x 1 m (19.69 in x 39.38 in)
Total Recycled Content (Pre Consumer)	39%
Indoor Air Quality	GREENGUARD Gold FloorScore® Certified CDPH 01350 Compliant
Environmental Certifications	NSF/ANSI 332 Silver Contributes to multiple IEQ and MR credits
LEED v4	

View the full product specification on interface.com

Installation Methods



ASHLAR



HERRINGBONE

Ready for More?

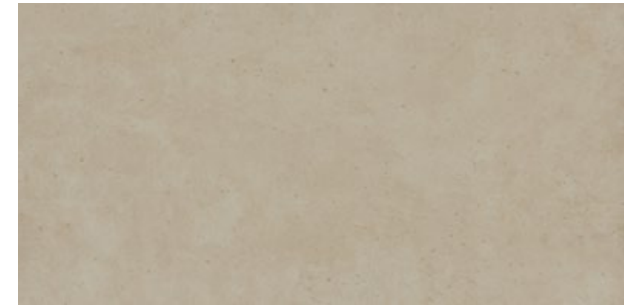
Find the latest color options, formats and full specifications on [Interface.com](https://interface.com). Create an account or login to take the next step for your project.

4.5 mm LVT

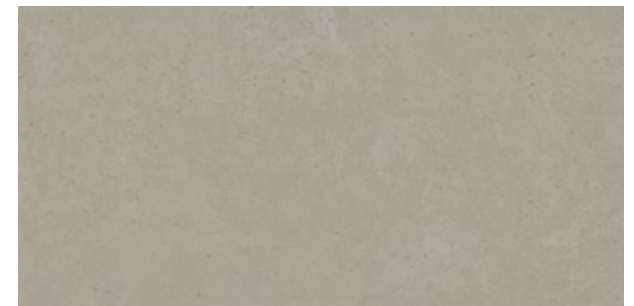


CHECK AVAILABILITY
ORDER SAMPLES

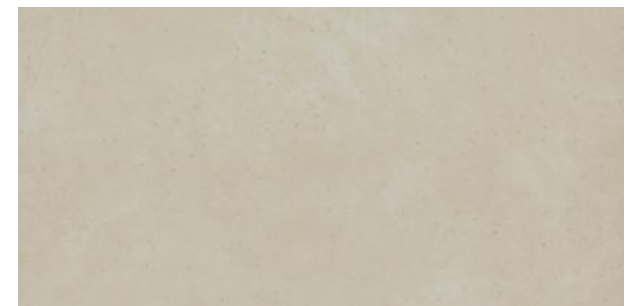
Hearth™ Color Range



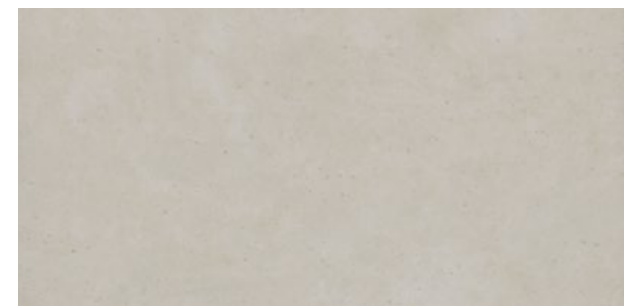
4.5 mm A03501 PETRA



4.5 mm A03502 GRIS



4.5 mm A03503 SANDSTONE



4.5 mm A03504 MARBLE DUST

Specifications

Product Number	A033
4.5 mm	High Performance Luxury Vinyl Tile
Product Construction	Class III Printed Vinyl Tile
Class/ASTM F1700	22 mil
Wear Layer Thickness	4.5 mm
Total Thickness	Commercial Grade
Backing Class	Ceramor™+ Coating
Finish	25 cm x 1 m (9.845 in x 39.38 in)
Nominal Dimensions	39%
Total Recycled Content (Pre Consumer)	GREENGUARD Gold
Indoor Air Quality	FloorScore® Certified
	CDPH 01350 Compliant
Environmental Certifications	NSF/ANSI 332 Silver
LEED v4	Contributes to multiple IEQ and MR credits

[View the full product specification on interface.com](#)

Installation Methods



ASHLAR



HERRINGBONE

Ready for More?

Find the latest color options, formats and full specifications on [Interface.com](#). Create an account or login to take the next step for your project.

4.5 mm LVT



CHECK AVAILABILITY
ORDER SAMPLES

On Grain™ Color Range



4.5 mm A03301 WHITE OAK VENEER



4.5 mm A03302 EUROPEAN WALNUT



4.5 mm A03303 HONEYED OAK



4.5 mm A03304 OILED WALNUT



4.5 mm A03305 BESPOKE TIMBER



4.5 mm A03306 GOLDEN OAK



4.5 mm A03307 PALE ASH



4.5 mm A03308 SMOKEY ASH

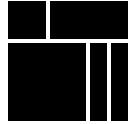




Waiting Area →
Lab ←
Exam Rooms ←
Restroom ←



Why Our Modular Resilient Sound Choice™ 4.5 mm LVT?



Integrated System

Save time and look good doing it. Our Sound Choice LVT integrates with our full product portfolio, allowing you to streamline specification and installation of your floorplate. Add our modular carpet for an inset rug or an adjacent field – no transition strip required.



Easy Maintenance

Create a unique look that lasts. Interface Sound Choice LVT extends the life of your floor. From simple maintenance like damp mopping to selectively replacing damaged tiles, your flooring investment will stand the test of time - beautifully and effortlessly.



ReEntry™

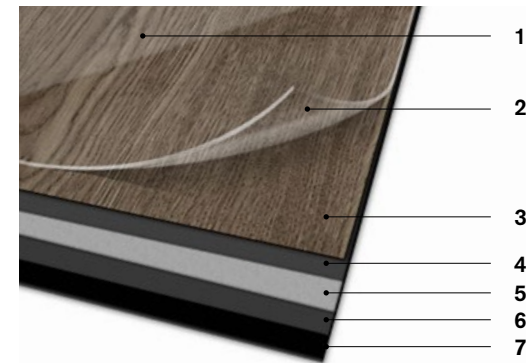
Keep flooring out of the landfill. Interface Sound Choice™ LVT is produced with a controlled material stream, so it is recyclable along with Interface carpet tile through our ReEntry™ program. ReEntry is the only third party certified recycling system among North American flooring manufacturers.



Noise Reduction

Silence distractions. Sound Choice is a specially formulated backing for superior noise reduction, offering you best-in-class impact sound reduction and floor to floor sound transmission.

High Performance from Top to Bottom



- 1. Ceramor™+ Coating.** Minimizes everyday scratching and scuffing.
- 2. Wear Layer.** High quality 22 mil layer enabling 15 years of resilience and performance.
- 3. Print Film.** Provides outstanding visuals of natural materials and Interface innovative designs.
- 4. Core Sheet.** Creates a thickness for a stronger core and reduces telegraphing from beneath.
- 5. Fiberglass.** Adds dimensional stability and controlled flexibility.
- 6. Core Sheet.** Creates a thickness for a stronger core and reduces telegraphing from beneath.
- 7. Sound Choice Backing.** Provides comfort and superior acoustic performance.

Interface Sound Choice LVT and carpet tile allow you to seamlessly move from hard to soft surfaces. No transition strip needed.



Environmental Product Declaration (EPD)

A third party verified statement of product ingredients and environmental impacts over the entire life cycle of a product.



GREENGUARD Gold & FloorScore®

Meeting the highest standards for indoor air quality and assuring very low emissions of VOCs, Interface LVT is GREENGUARD Gold and FloorScore® Certified and CDPH 01350 compliant.



Health Product Declaration (HPD)

A transparency tool for evaluating if a product includes materials of concern and whether it supports Green Chemistry.



NSF/ANSI 332 Silver

This standard evaluates the environmental impact of resilient floor covering for its entire life cycle.

📍 Samples

Register and order samples at [interface.com](https://www.interface.com). Not near a computer? You can also request samples by calling one of the numbers below.

United States
1.877.605.1500

Canada
1.866.398.3192

interface.com

Do more on [interface.com](https://www.interface.com)

- Browse products and order samples
- Save and share favorites
- See images of products in a variety of room scenes
- Browse floor designs, change colors, upload your own image, download and share
- Get full specifications, sustainability certifications and more
- Check order status and inventory availability
- Sign up to get the latest information on Interface products and news

We have tried our very best to accurately represent product colors. However, due to the nature of printed materials, color of actual products may vary slightly. Please request a sample to see actual product color.

All product specifications reflect averages derived from product sample testing, are subject to normal manufacturing and testing tolerances and inherent pattern variances, and may be changed without notice. For more information about these and other important attributes of the product(s) described herein, including recycled content and product warranty information, please see [interface.com/disclaimer](https://www.interface.com/disclaimer).



PLEASE RECYCLE

Printed on 50% post consumer waste (PCW) fiber manufactured using wind power.

interface.com

United States Headquarters

1280 West Peachtree Street NW
Atlanta, GA 30309
1.800.634.6032

Canadian Headquarters

233 Lahr Drive
Belleville, ON K8N 5S2
1.800.267.2149 ext. 52128

CIM# IFS00942 06/2024



Climate change is undeniable. And reversible. Our mission is to prove it.
Join the #ClimateTakeBack and help create a climate fit for life.