



LAUNCHPAD

Interface®



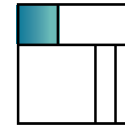
DL901: Fieldstone

Specifications

Style Number	1500202500
Size	50cm x 50cm
Backing	GlasBac®
Yarn Manufacturer	Aquafil
Yarn System	100% Recycled Content Nylon
Color System	100% Solution Dyed
Construction	Tufted Pattern Loop
Installation	Monolithic



MONOLITHIC



SIZE



106526 Mica



106527 Fieldstone



Specifications

Style Number	1500302500
Size	50cm x 50cm
Backing	GlasBac®
Yarn Manufacturer	Aquafil
Yarn System	100% Recycled Content Nylon
Color System	100% Solution Dyed
Construction	Tufted Pattern Loop
Installation	Monolithic



MONOLITHIC



SIZE



106530 Mica



106531 Fieldstone

DL902: Mica

Colors shown on this page are available through the Sample Center



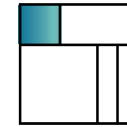
DL903: Fieldstone

Specifications

Style Number	1500402500
Size	50cm x 50cm
Backing	GlasBac®
Yarn Manufacturer	Aquafil
Yarn System	100% Recycled Content Nylon
Color System	100% Solution Dyed
Construction	Tufted Pattern Loop
Installation	Monolithic



MONOLITHIC



SIZE



106534 Mica



106535 Fieldstone



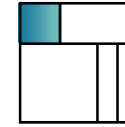
DL904: Flint

Specifications

Style Number DL904	1500502500
Style Number DL904N	1502002500
Size	50cm x 50cm
Backing	GlasBac®
Yarn Manufacturer	Aquafil
Yarn System	100% Recycled Content Nylon
Color System	100% Solution Dyed
Construction	Tufted Pattern Loop
Installation	Monolithic



MONOLITHIC



SIZE



DL904N: 106538 Flint



DL904: 106539 Pearl



PRODUCT DL905 COLOR 106715 CHARCOAL PRODUCT DL906 COLOR 106719 CHARCOAL/ASH
PRODUCT DL907 COLOR 106723 ASH INSTALLED MONOLITHIC

Specifications

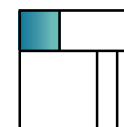
Style Number	1502902500
Size	50cm x 50cm
Backing	GlasBac®
Yarn Manufacturer	Aquafil
Yarn System	100% Recycled Content Nylon
Color System	100% Solution Dyed
Construction	Tufted Pattern Loop
Installation	Monolithic, Non Directional



MONOLITHIC



NON DIRECTIONAL



SIZE



106715 Charcoal

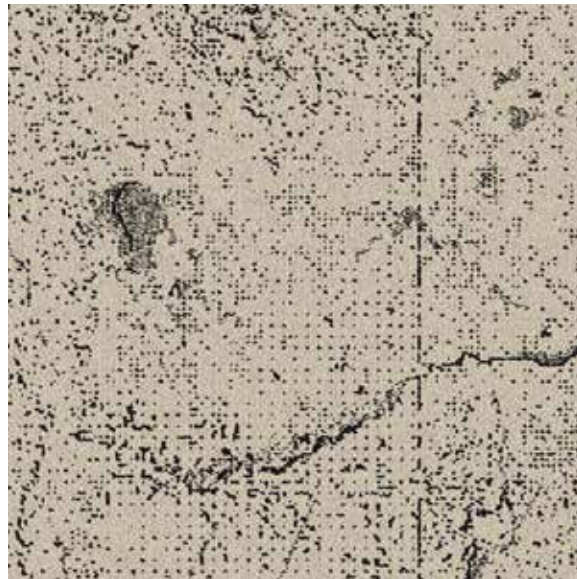


106716 Graphite

DL905: Charcoal



106717 Limestone



106718 Marble



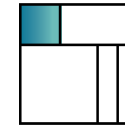
DL906: Graphite/Basalt

Specifications

Style Number	1503002500
Size	50cm x 50cm
Backing	GlasBac®
Yarn Manufacturer	Aquafil
Yarn System	100% Recycled Content Nylon
Color System	100% Solution Dyed
Construction	Tufted Pattern Loop
Installation	Non Directional



NON DIRECTIONAL



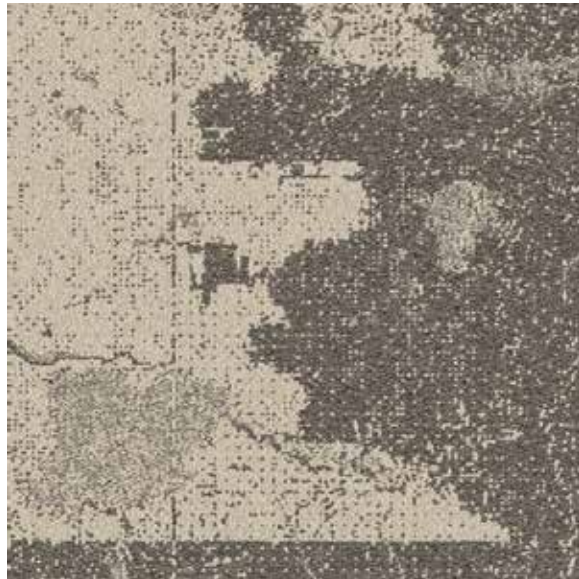
SIZE



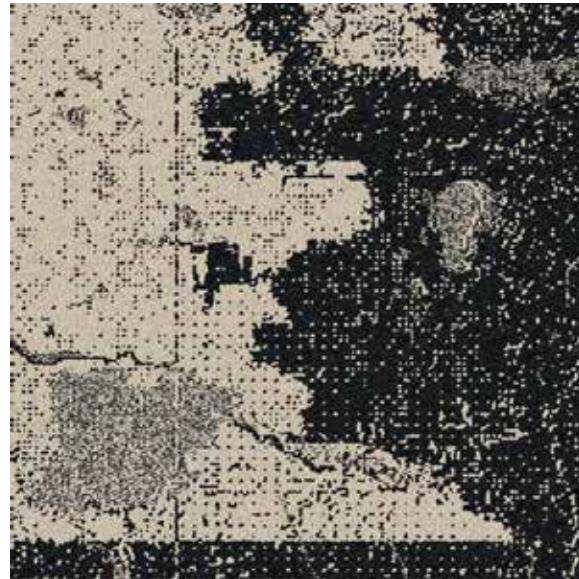
106719 Charcoal/Ash



106720 Graphite/Basalt



106721 Limestone/Travertine



106722 Marble/Onyx

Specifications

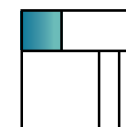
Style Number	1503102500
Size	50cm x 50cm
Backing	GlasBac®
Yarn Manufacturer	Aquafil
Yarn System	100% Recycled Content Nylon
Color System	100% Solution Dyed
Construction	Tufted Pattern Loop
Installation	Monolithic, Non Directional



MONOLITHIC



NON DIRECTIONAL



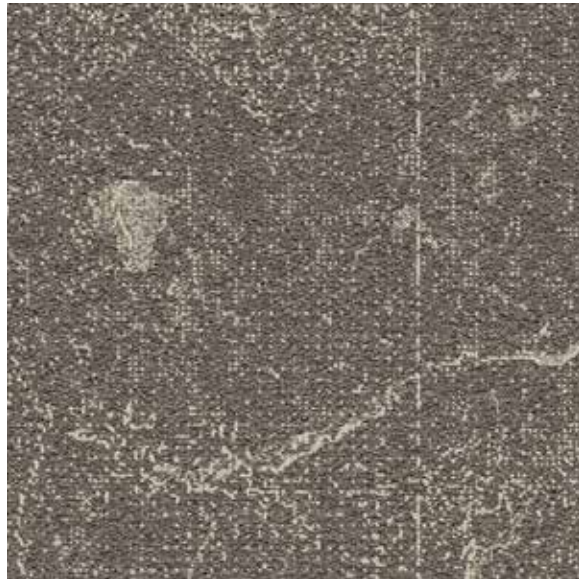
SIZE



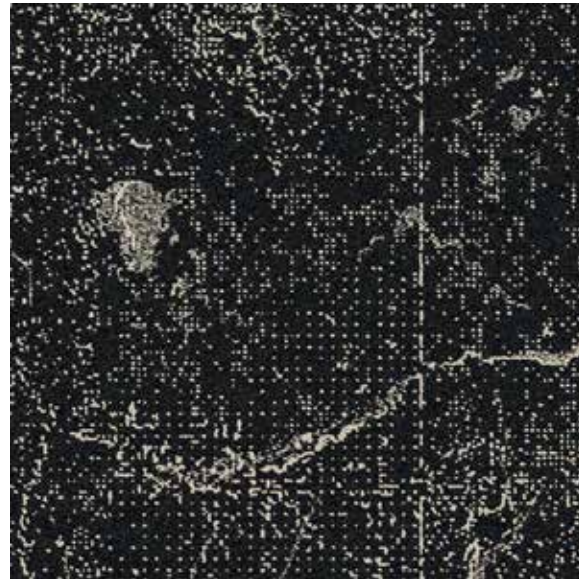
106723 Ash



106724 Basalt



106725 Travertine



106726 Onyx



PRODUCT DL908 COLOR 106555 FLINT PRODUCT DL909 COLOR 106701 FLINT
PRODUCT DL9010 COLOR 106693 FLINT INSTALLED ASHLAR



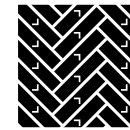
Speckled: Daylight

Specifications

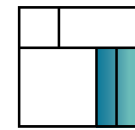
Style Number	142760AK00
Size	25cm x 1m
Backing	GlasBac®
Yarn Manufacturer	Universal
Yarn System	Post-Consumer Content Nylon
Color System	100% Solution Dyed
Construction	Tufted Sheared
Installation	Ashlar, Herringbone



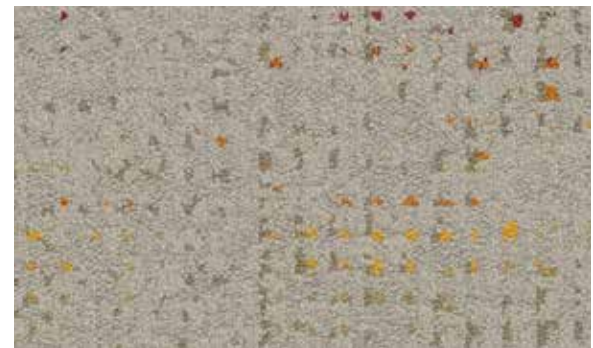
ASHLAR



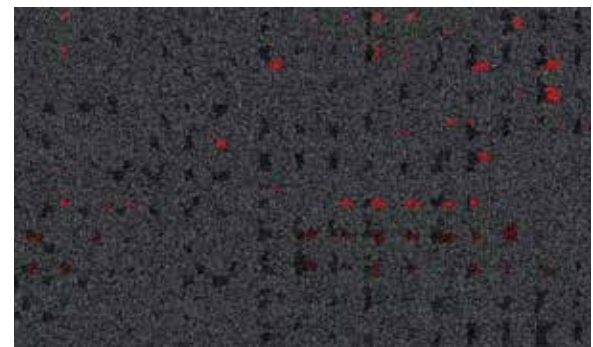
HERRINGBONE



SIZE



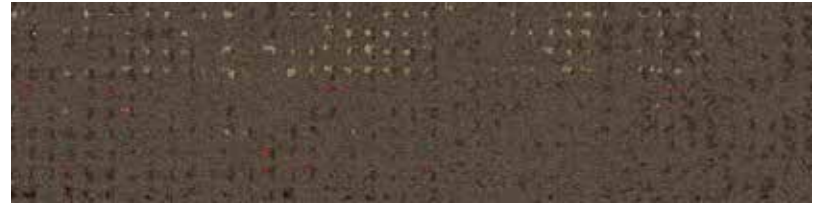
105232 Daylight



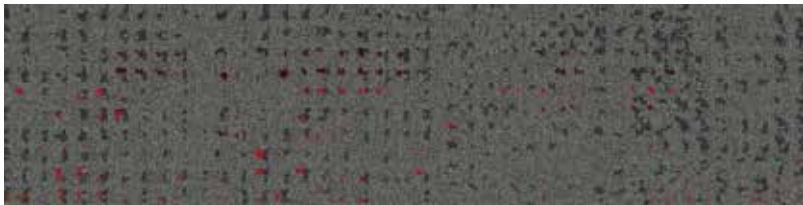
105236 Eclipse



105233 Desert Shadow



105234 Fawn



105235 Morning Mist



105237 Abyss



105238 Evening Dusk



PRODUCT DEEPLY ROOTED COLOR 106146 WALNUT/WINTER PRODUCT UPROOTED COLOR 106138 WALNUT/WINTER
PRODUCT VELVET BARK COLOR 106130 WALNUT INSTALLED ASHLAR

Specifications

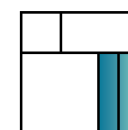
Style Number	141700AK00
Size	25cm x 1m
Backing	GlasBac®
Yarn Manufacturer	Universal
Yarn System	Post-Consumer Content Nylon
Color System	100% Solution Dyed
Construction	Tufted Pattern Loop
Installation	Ashlar, Herringbone



ASHLAR



HERRINGBONE



SIZE



106128 Maple



106130 Walnut

Velvet Bark: Maple



106125 Birch



106126 Pine



106127 Poplar



106129 Willow



106131 Cedar



106132 Aspen



Uprooted: Walnut/Winter

Specifications

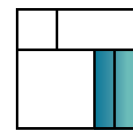
Style Number	141710AK00
Size	25cm x 1m
Backing	GlasBac®
Yarn Manufacturer	Universal
Yarn System	Post-Consumer Content Nylon
Color System	100% Solution Dyed
Construction	Tufted Pattern Loop
Installation	Ashlar, Herringbone



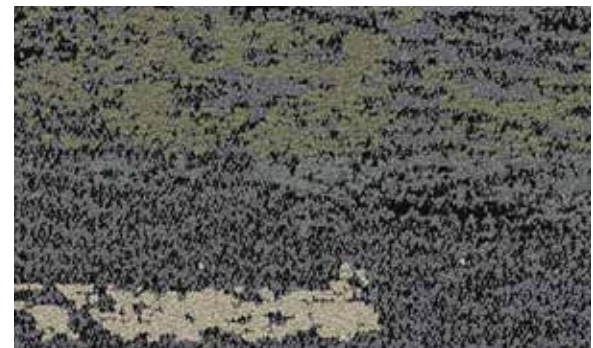
ASHLAR



HERRINGBONE



SIZE



106136 Maple/Sage



106138 Walnut/Winter



106133 Birch/Ivy



106134 Pine/Meadow



106135 Poplar/Fern



106137 Willow/Moss



106139 Cedar/Autumn



106140 Aspen/Prairie

Specifications

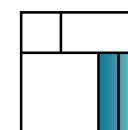
Style Number	141720AK00
Size	25cm x 1m
Backing	GlasBac®
Yarn Manufacturer	Universal
Yarn System	Post-Consumer Content Nylon
Color System	100% Solution Dyed
Construction	Tufted Pattern Loop
Installation	Ashlar, Herringbone



ASHLAR



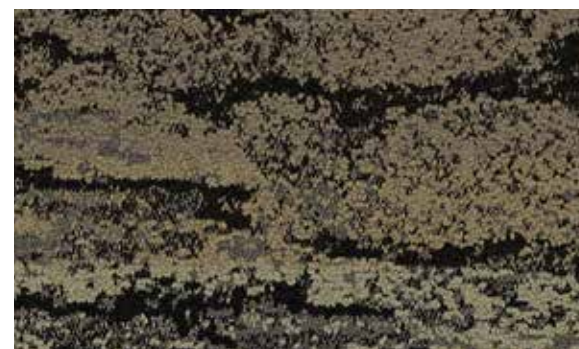
HERRINGBONE



SIZE



106144 Maple/Sage

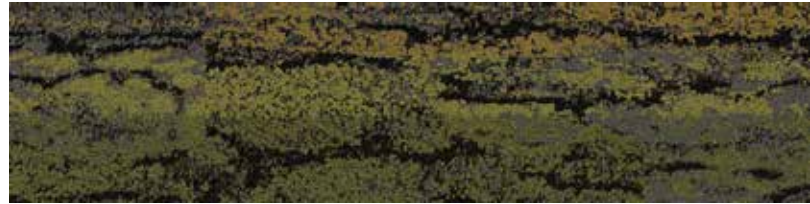


106146 Walnut/Winter

Deeply Rooted: Maple/Sage



106141 Birch/Ivy



106142 Pine/Meadow



106143 Poplar/Fern



106145 Willow/Moss



106147 Cedar/Autumn



106148 Aspen/Prairie

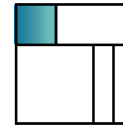


Specifications

Style Number	150380250G
Size	50cm x 50cm
Backing	CQuest™GB
Yarn Manufacturer	Aquafil
Yarn System	100% Recycled Content Nylon
Color System	100% Solution Dyed
Construction	Tufted Pattern Loop
Installation	Monolithic



MONOLITHIC



SIZE



106877 Ink



106878 Graphite

DL923: Ink



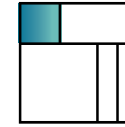
DL924N: Onyx

Specifications

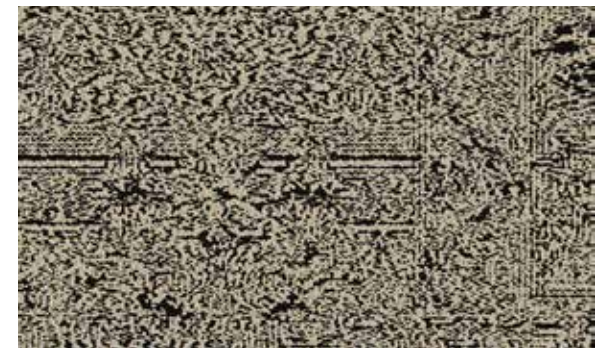
Style Number DL924	150390250G
Style Number DL924N	150410250G
Size	50cm x 50cm
Backing	CQuest™GB
Yarn Manufacturer	Aquafil
Yarn System	100% Recycled Content Nylon
Color System	100% Solution Dyed
Construction	Tufted Pattern Loop
Installation	Monolithic



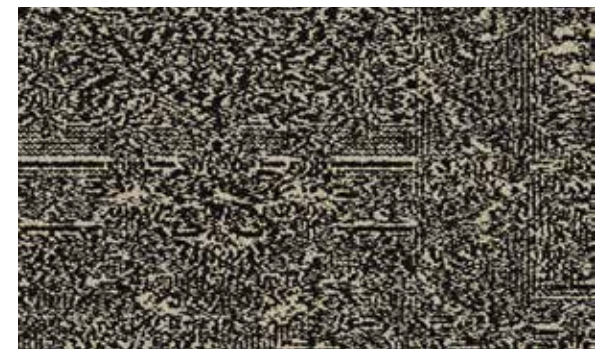
MONOLITHIC



SIZE



DL924: 106879 Alabaster



DL924N: 106880 Onyx



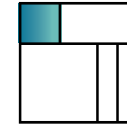
DL925: Mineral

Specifications

Style Number DL925	150350250G
Style Number DL925N	150420250G
Size	50cm x 50cm
Backing	CQuest™GB
Yarn Manufacturer	Aquafil
Yarn System	100% Recycled Content Nylon
Color System	100% Solution Dyed
Construction	Tufted Pattern Loop
Installation	Monolithic



MONOLITHIC



SIZE



DL925: 106865 Shell



DL925: 106866 Mineral



DL925N:106867 Granite



DL925N:106868 Iron



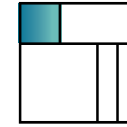
DL926: Quartz

Specifications

Style Number DL926	150360250G
Style Number DL926N	150430250G
Size	50cm x 50cm
Backing	CQuest™GB
Yarn Manufacturer	Aquafil
Yarn System	100% Recycled Content Nylon
Color System	100% Solution Dyed
Construction	Tufted Pattern Loop
Installation	Monolithic



MONOLITHIC



SIZE



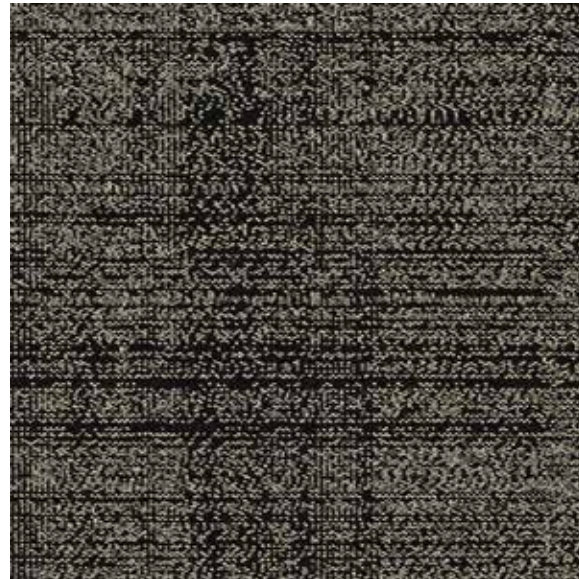
DL926: 106869 Quartz



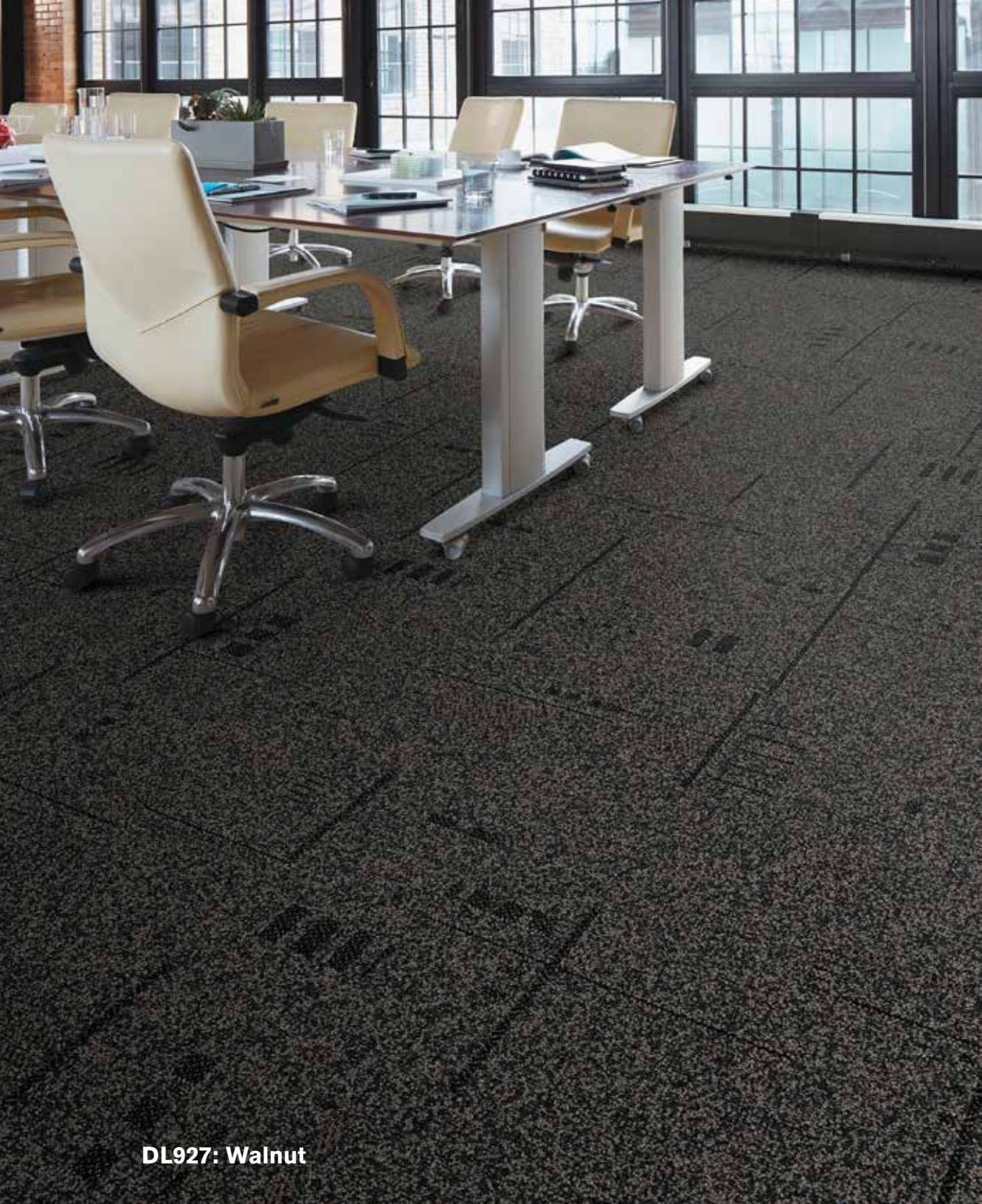
DL926N: 106870 Pecan



DL926N: 106871 Charcoal



DL926N: 106872 Ebony



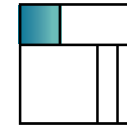
DL927: Walnut

Specifications

Style Number	150370250G
Size	50cm x 50cm
Backing	CQuest™GB
Yarn Manufacturer	Aquafil
Yarn System	100% Recycled Content Nylon
Color System	100% Solution Dyed
Construction	Tufted Pattern Loop
Installation	Monolithic



MONOLITHIC



SIZE



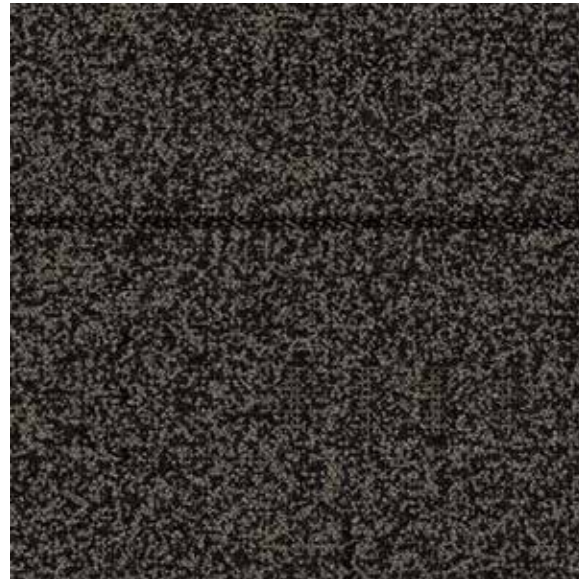
106873 Nickel



106874 Stone



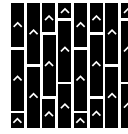
106875 Metal



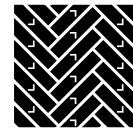
106876 Walnut

Specifications

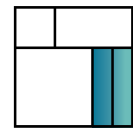
Style Number	128960AK0G
Size	25cm x 1m
Backing	CQuest™GB
Yarn Manufacturer	Aquafil
Yarn System	100% Recycled Content Nylon
Color System	100% Solution Dyed
Construction	Tufted Pattern Loop
Installation	Ashlar, Herringbone



ASHLAR



HERRINGBONE



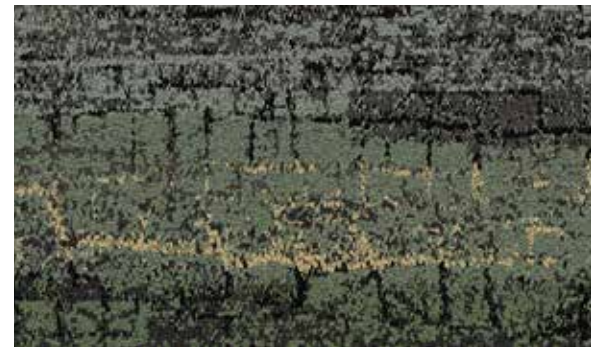
SIZE



Granite Peak: Boulder



105959 Spruce



105960 Sagebrush



105961 Bluff



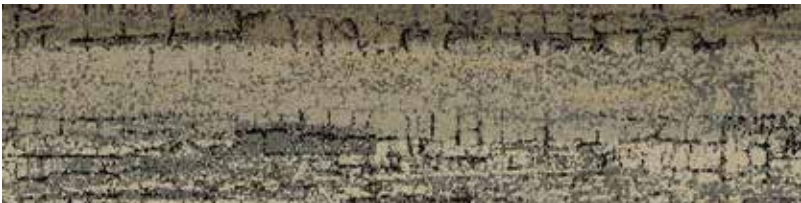
105962 Riverbed



105963 Canyon



105964 Boulder



105965 Sandbar



105966 Glacier

Interface®